



BARIATRIC-
REHAB SHOWER/COMMODE CHAIR

- Complete Packages for Easier Ordering Available
- Stainless Steel Frame
- Several Seat Options Available
- Three Mobility Choices:
Four 6" Casters, 20" or 24" Rear Wheels
- Six Seat and Frame Sizes:
20"Wx20"D, 22"Wx20"D,
24"Wx20"D, 26"Wx20"D,
28"Wx20"D, 30"Wx20"D
- 600 lb. (272kg) Weight Capacity

The 720 boasts a 600 lb. weight limit that will give both client and caregiver the safety, stability and access needed for bariatric clients.

Many features and options of this rehab shower/commode chair help fulfill the needs of rehabilitating patients, long-term care or homebound clients. The stainless steel frame combines high strength with low maintenance, making the 720 the right choice shower/commode for bariatric clients.

FRAMES



P13598
20"Wx20"D
Stainless Steel
Frame



P13599
22"Wx20"D
Stainless Steel
Frame



P13600
24"Wx20"D
Stainless Steel
Frame



P13601
26"Wx20"D
Stainless Steel
Frame



P13602
28"Wx20"D
Stainless Steel
Frame



P13603
30"Wx20"D
Stainless Steel
Frame



P13670
Front
Anti-Tippers

WHEELS/REAR CASTERS



P13283-2
6" Locking
Casters
(pair)



P13860
20" Wheels
(pair)



P13863
20" Pneumatic
Street Tread
Wheels
(pair)



P13862
24" Wheels
(pair)



P13864
24" Pneumatic
Street Tread
Wheels
(pair)



P13865
24" Flat Free Street
Tread Wheels
(pair)



P13855
20" PVC Handrims
(replaces standard
handrims, pair)

AXLES



P13857
24" PVC Handrims
(replaces standard
handrims, pair)



P13769
Bolted Axles with
Tipping Levers
(pair)



P60532
Wheel Locks
(pair)



P13135
Wheel Locks with
Extended Handle
(pair)



P60780-2
6" Casters
(pair)



P13283-2
6" Locking Casters
(pair)

WHEEL LOCKS

FRONT CASTERS

SEATS



P60886
20"Wx20"D
Ensolite® 1.5" foam
Race Track Oval Seat
A-7.75"xB-12.75" opening



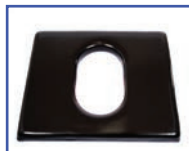
P61117
20"Wx20"D
Ensolite® 1" foam
Front/Rear Open Seat
A-4.5"xB-7.75" opening



P60887
22"Wx20"D
Ensolite® 1.5" foam
Race Track Oval Seat
A-7.75"xB-12.75" opening



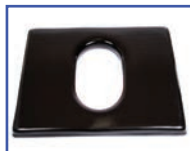
P61118
22"Wx20"D
Ensolite® 1" foam
Front/Rear Open Seat
A-4.5"xB-7.75" opening



P60888
24"Wx20"D
Ensolite® 1.5" foam
Race Track Oval Seat
A-7.75"xB-12.75"



P61119
24"Wx20"D
Ensolite® 1" foam
Front/Rear Open Seat
A-4.5"xB-7.75" opening



P60889
26"Wx20"D
Ensolite® 1.5" foam
Race Track Oval Seat
A-7.75"xB-12.75"

ARMRESTS



P61110
28"Wx20"D
Ensolite® 1.5" foam
Race Track Oval Seat
A-7.75"xB-12.75"



P61111
30"Wx20"D
Ensolite® 1.5" foam
Race Track Oval Seat
A-7.75"xB-12.75"



P13584
Left Hand Armrest
with Pad



P13585
Right Hand Armrest
with Pad



P13586
Left Hand Armrest
with Arm Trough



P13587
Right Hand Armrest
with Arm Trough

LEG RESTS



PL13581
Left Gooseneck
Leg Rest



PR13581
Right Gooseneck
Leg Rest



P13582
Left Elevating Leg
Rest



P13583
Right Elevating Leg
Rest



P13196
20"W 1-pc. Foot
Plate/Leg Rest



P13184
22"W 1-pc. Foot
Plate/Leg Rest



P13197
24"W 1-pc. Foot
Plate/Leg Rest

LEG RESTS



P13198
26"W 1-pc. Foot Plate/Leg Rest

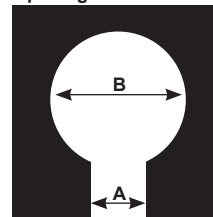


P13579
28"W 1-pc. Foot Plate/Leg Rest

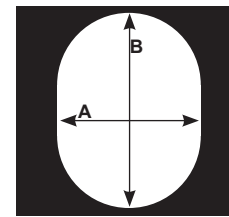


P13580
30"W 1-pc. Foot Plate/Leg Rest

Front/Rear Seat Opening Measurements



Race Track Seat Opening Measurements



FOOT PLATES



PL11099
Left Foot Plate



PR11099
Right Foot Plate



PL11100
Left Foot Plate with Heel Loop



PR11100
Right Foot Plate with Heel Loop



P13891
Left Oversized Aluminum Foot Plate



P13892
Right Oversized Aluminum Foot Plate



PL11101
Left Padded Foot Plate

BACKS



P11101
Right Padded Foot Plate



P13592
20"W Contoured Solid Back



P13593
22"W Solid Back



P13594
24"W Solid Back



P13595
26"W Solid Back



P13596
28"W Solid Back



P13597
30"W Solid Back

BELTS



PT60884
Trunk Belt
(66", 68", 72", 74" and 76" circumference with 12" overlap)



PW60884
Waist Belt
(for 20"W, 22"W and 24"W frames only, 66", 68" and 70" circumference with 12" overlap)



PW11095
Waist Belt
(for 26"W frame only, 76" circumference with 12" overlap)



P11093
Bodypoint®
Trunk Belt
(for 20"W and 22"W frame only, 48" circumference with 12" overlap)



P11102
Bodypoint®
Trunk Belt
(for 20"W and 22"W frame only, pair)



P11116
Bodypoint®
Trunk Belt & Waist Belt
(for 20"W and 22"W frames only)



P11112
Bodypoint®
XL Trunk Belt
(for 24"W and 26" frame only)

PANS



P11113
Bodypoint®
Belt w/Quick Release Knobs
(for 20"W and 22" frame only)



P13844
20"Wx20"D Pan/Hanger



P13845
22"Wx20"D Pan/Hanger



P13846
24"Wx20"D Pan/Hanger



P13847
26"Wx20"D Pan/Hanger



P13848
28"Wx20"D Pan/Hanger



P13849
30"Wx20"D Pan/Hanger



720 with Options



720 with Options

full option details at
activeaid.com

SPECIFICATIONS

	20"Wx20"D Frame	22"Wx20"D Frame	24"Wx20"D Frame	26"Wx20"D Frame	28"Wx20"D Frame	30"Wx20"D Frame
Weight Capacity (272kg)	600 lbs.	600 lbs.	600 lbs.	600 lbs.	600 lbs.	600 lbs.
Seat Width	20" (50cm)	22" (55cm)	24" (60cm)	26" (66cm)	28" (71cm)	30" (76cm)
Width between Arm Rests						
Armrest with Pad	20" (50cm)	22" (55cm)	24" (60cm)	26" (66cm)	28" (71cm)	30" (76cm)
Armrest with Arm Troughs	18" (45cm)	20" (50cm)	22" (55cm)	24" (60cm)	26" (66cm)	28" (71cm)
Seat Depth	20" (50cm)	20" (50cm)	20" (50cm)	20" (50cm)	20" (50cm)	20" (50cm)
Seat Height Range From Floor to Top of Seat (transfer height)	Front to Back - 20" Wheels - 22.5"-22" (57-55cm) 6" rear casters - 22.5"-22" (57-55cm)					
Leg Rest Range						
Gooseneck	13.5"-21" (34-53cm)			12.25"-19.75" (31-50cm)		
Elevating - Up	16"-23" (40-58cm)			14.75"-21.75" (37-55cm)		
Elevating - Down	16.75"-23.75" (42-60cm)			15.5"-22.5" (39-57cm)		
One-Piece			18" (45cm)			
Usable Seat Depth w/Solid Back	20" (50cm)	20" (50cm)	20" (50cm)	20" (50cm)	20" (50cm)	20" (50cm)
Arm Height from Top of Seat						
Armrest with Pad			7.5" (19cm)			
Armrest with Arm Troughs			7.75" (19cm)			
Back Height From Top of Seat			16" (40cm)			
Gap between top of seat and bottom of back			8" (20cm)			
Seat to Back Angle (or Range) (Recline)			12°			
Under Seat Height Clearance			18.5"			
Under Seat Width Clearance	16" (40cm)	17" (43cm)	18" (45cm)	20" (50cm)	22" (55cm)	24" (60cm)
Overall Width						
w/20" Wheels	28.5" (72cm)	30.5" (77cm)	32.5" (82cm)	34.5" (87cm)	36.5" (92cm)	38.5" (97cm)
w/6" Casters and Armrest w/Pad	24.25" (61cm)	26.25" (66cm)	28.25" (71cm)	30.25" (76cm)	32.25" (81cm)	34.25" (86cm)
w/6" Casters and Armrest with Arm Troughs	27.5" (69cm)	29.5" (74cm)	31.5" (80cm)	33.5" (85cm)	35.5" (90cm)	37.5" (95cm)
Overall Length						
Min. with 20" Wheels				42" (106cm)		
Min. with 6" Casters				41.5" (105cm)		
Back of Unit to Start of Commode Opening						
with 20" Wheels				13.75" (34cm)		
with 6" Casters				13.25" (33cm)		
Turning Diameter with 6" rear casters	45" (114cm)	47" (119cm)	49" (124cm)	51" (129cm)	53" (134cm)	55" (139cm)
Seat Used to Generate Specifications			#61111	30"Wx20"Dx2.5"H		