

ActiveAid

STAINLESS STEEL BATH, SHOWER
AND COMMODE PRODUCTS



101

202

600

720

922

1100

1218

285

285TR

Bath/Toilet Modular Systems

101 1

202 3

Shower/Commode Chair

600 5

Bariatric Shower/Commode Chair

720 9

Folding Shower/Commode Chair

922 13

Seat Height/Slope Adjustable Shower/Commode Chair

1100 17

Tilt, Recline, Seat Height/Shower/Commode Chairs

1218 21

285 25

285TR 29



BATH/TOILET MODULAR SYSTEM- REHAB SHOWER/COMMODE CHAIR

- Complete Packages for Easier Ordering Available
- Stainless Steel Frame
- Height Adjustable
- Can be used as a Raised Toilet Seat
- Lightweight
- 350 lb. (158kg) Weight Capacity
- Several Seat Options Available
- Seat usable in Four Different Directions

The 101's unique design accommodates perineal access from four directions. The cut-out portion of the seat can be placed over the toilet in the desired direction, and the legs can be adjusted in height while maintaining a stable platform for seating.

With the 12 different seating options and large seating surface the 101 provides excellent support, while the cut-out may offer some additional pressure relief. With these options, the customer can find the size, contour, and shape to fit a wide range of needs. It is lightweight, easy to move out of the way and no tools are required for disassembling the legs for travel or for height adjustment. Easy to use, versatile, sturdy and comfortable makes the 101 an outstanding bathroom aid.

FRAMES



PRT50000
18"Wx18"D
White Stainless
Steel Frame



Shown with
P61086 Seat



Shown with
P60725 Seat



Shown with
P61063 Seat

LEGS



PRT50001
Short Legs w/
Crutch Tips
(seat height range
from floor to bottom
frame-15.5"-18.5")



PRT50002
Short Legs w/
Suction Tips
(seat height range
from floor to bottom
frame-15.5"-18.5")

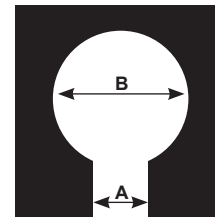


PRT50003
Long Legs w/
Crutch Tips
(seat height range
from floor to bottom
frame-18.5"-21.5")

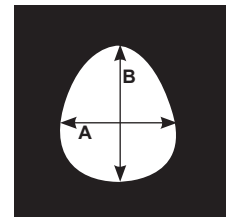


PRT50004
Long Legs w/
Suction Tips
(seat height range
from floor to bottom
frame-18.5"-21.5")

**Seat Opening
Measurements**



**Oval Opening
Measurements**



SEATS

*Seat works in all 4 positions



P60928*
16"Wx16"D
Ensolute® 1" foam
Front/Rear Open Seat
A-4"xB-6.5" opening



P60686*
16"Wx18"D
Ensolute® 2" foam
Front/Rear Open Seat
A-4.25"xB-7" opening



P60811*
16"Wx15.5"D
Ensolute® 2" waterfall foam
Front/Rear Open Seat
A-3.5"xB-6" opening



P60722*
18"Wx16"D
Ensolute® 2" foam
Front/Rear Open Seat
A-4.5"xB-7.5" opening



P60911*
18"Wx18"D
Ensolute® 1" foam
Front/Rear Open Seat
A-4.5"xB-7.5" opening



P60913*
18"Wx18"D
Ensolute® 2" waterfall foam
Front/Rear Open Seat
A-5.25"xB-8" opening



P60993*
18"Wx18"D
Comfortuff 1.5" waterfall foam
Front/Rear Open Seat
A-5"xB-8" opening



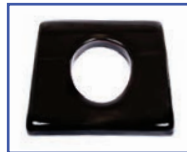
P60850*
18"Wx18"D
Ensolute® 1" waterfall foam
Front/Rear Open Seat
A-5"xB-8" opening



P61063
18"Wx18"D
Ensolute® 2" foam
Front Open Contoured Seat
A-4.25"xB-7.5" opening



P61058
18"Wx18"D
Ensolute® 2" waterfall foam
Front Open Contoured Seat
A-5.5"xB-8.25" opening



P60725
18"Wx16"D
Ensolute® 2" foam
Oval Seat
A-7.75"xB-9" opening



P61086
18"Wx18"D
Ensolute® 2" foam
Solid Seat

full option details at
activeaid.com

SPECIFICATIONS

Weight Capacity

Seat Width

Seat Depth

Seat Height Range From Floor to Top of Seat (transfer height)

Under Seat Height Clearance

Under Seat Width Clearance

Overall Width

min.- short leg, crutch tip
min.- short leg, suction cup
max.- long leg, crutch tip
max.- long leg, suction cup

Back of Unit to Start of Commode Opening

Seat Used to Generate Specifications

350 lbs. (158kg)

16" (40cm)

16" (40cm)

18.25"-21.25" (46-53cm) short legs, crutch tip
21"-24" (53-60cm) long legs, crutch tip

15.5"-18.5" (39-46cm) short legs, crutch tip
18.5"-21.5" (46-54cm) long legs, crutch tip

16" (40cm)

21.75" (55cm)

23.75" (60cm)

23" (58cm)

25" (63cm)

6.75"-7" (17cm) short legs, crutch tip

7"-7.25" (17cm) long legs, crutch tip

#60928 16"Wx16"Dx1.5"H



BATH/TOILET MODULAR SYSTEM- REHAB SHOWER/COMMODE CHAIR

- Complete Packages for Easier Ordering Available
- Stainless Steel Frame
- Height Adjustable
- Can be used as a Raised Toilet Seat or Bath Transfer Bench
- Lightweight
- 350 lb. (158kg) Weight Capacity
- Several Seat Options Available
- Seat usable in Four Different Directions

The 202 is unique in its design to accommodate perineal access from four directions. The cut-out portion of the seat can be placed over the toilet in the desired direction, and the legs can be adjusted in height while maintaining a stable platform for seating.

With the five different seating options and large seating surface, the 202 provides excellent support while the cut-out may offer some additional pressure relief. With these options, the customer can find the size, contour, and shape to fit a wide range of needs. It is lightweight, easy to move out of the way and no tools are required for disassembling the legs for travel or for other adjustments. Easy to use, versatile, sturdy and comfortable makes the 202 an outstanding bathroom aid.

FRAMES



P13641
18"Wx18"D
White Stainless
Steel Frame

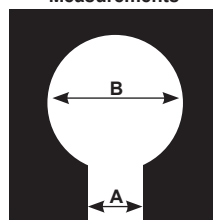
LEGS



P13642
Legs
w/Crutch Tips
(height seat range
from floor to bottom
frame-16"-19")



P13643
Legs
w/Suction Tips
(height seat range
from floor to bottom
frame-16"-19")

Seat Opening
Measurements

*Seat works in all 4 positions

SEATS



P60993*
18"Wx18"D
Comfortuff 1.5" waterfall foam
Front/Rear Open Seat
A-5"xB-8" opening



P60913*
18"Wx18"D
Ensolite® 2" waterfall foam
Front/Rear Open Seat
A-5.25"xB-8" opening



P61086*
18"Wx18"D
Ensolite® 2" foam
Solid Seat



P61058
18"Wx18"D
Ensolite® 2" waterfall foam
Front Open Contoured Seat
A-5.5"xB-8.25" opening



P60850*
18"Wx18"D
Ensolite® 1" waterfall foam
Front/Rear Open Seat
A-5"xB-8" opening

BACKS



P13295
Back Tubes w/Solid
Back Pad
(13.5"H)



PL13291
Left Hand
Armrest with Pad



PR13291
Right Hand
Armrest with Pad



PW60884
Waist Belt
(64" circumference with
12" overlap)



PT60909
Trunk Belt
(54" circumference with
12" overlap)

BELTS

BENCHES



P13294
B-O Transfer Bench



P13352
Short Transfer
Bench



P13876
18"Wx18"D
Pan/Hanger

PANS

SPECIFICATIONS

Weight Capacity

Seat Width

Seat Width between Arm Rests

Seat Depth

Seat Height Range From Floor to Top of Seat (transfer height)

Arm Height from Top of Seat

Back Height From Top of Seat

Gap between top of seat and bottom of back

Seat to Back Angle (or Range) (Recline)

Under Seat Height Clearance

Under Seat Width Clearance

Overall Width

Overall Depth

Back of Unit to Start of Commode Opening

Bench Cushion Size

BO Transfer Bench Cushion Size

Adjustment (Measure inside and outside tub dimensions)

Short Transfer Bench cushion size

Adjustment (Measure inside and outside tub dimensions)

Top of seat to bottom of bench feet

Seat Used to Generate Specifications

at seat level
at crutch tips
with back
with short bench
with BO bench
with back
with BO bench
with back
with BO bench (without back)

350 lbs. (158kg)

18" (45cm)

18" (45cm)

18" (45cm)

19.5"-22.5" (49-57cm) crutch tip

8" (20cm)

13.5" (34cm)

5.25" (13cm)

10°

16"-19" (40-48cm) crutch tip

15" (38cm)

19.5" (49cm)

17.5" (44cm)

22.25" (56cm)

30.5" (77cm)

36.5" (92cm)

21.5" (54cm)

19.5" (49cm)

7.25" (18cm)

5.25" (13cm)

8"Wx20"D (20-50cm)

14"Wx20"D (35x50cm)

4" (10cm)

8"W x 20"D (20x50cm)

1.75" (4cm)

6.75"-8.5" (17-21cm)

#60913 18"Wx18"Dx3"H



202
with Support Options

full option details at
activeaid.com



REHAB SHOWER/COMMODE CHAIR

- Complete Packages for Easier Ordering Available
- Stainless Steel Frame
- Several Frame and Seat Sizes Available
18"Wx18"D, 18"Wx20"D, 20"Wx18"D and
22"Wx18"D
- Three Mobility Choices:
Four 5" Casters, 20", or 24"
Wheels
- 350 lb. (158kg) Weight Capacity

All ActiveAid chairs are stainless steel for long-lasting and durable use. The large selection of seats allows for customizing for the individual. The 600 has many available options so the chair can be fitted to the user, or it could be set up to be used in a multi-use facility. From the least involved client to the most involved, this chair is readily able to fit their needs.

The 600 series shower/commode chairs have features that address the needs of the homebased users, long-term care, home care clients, and caregivers. This is the go-to chair because of all the options and sizes available. From 5" casters to large wheels and many choices to pick from, this series is designed to make those daily activities just a little bit easier.

FRAMES



P13675
18"Wx18"D
Stainless Steel
Frame



P13676
18"Wx20"D
Stainless Steel
Frame



P13677
20"Wx18"D
Stainless Steel
Frame



P13678
22"Wx18"D
Stainless Steel
Frame



P60800-2
5" Dual Locking
Casters
(pair)



P13860
20" Wheels
(pair)



P13863
20" Pneumatic
Street Tread
Wheels
(pair)

WHEELS/REAR CASTERS



P13862
24" Wheels
(pair)



P13864
24" Pneumatic
Street Tread
Wheels
(pair)



P13865
24" Flat Free Street
Tread Wheels
(pair)



P13855
20" PVC Handrims
(replaces standard
handrims, pair)



P13857
24" PVC Handrims
(replaces standard
handrims, pair)



P13649
Bolted Axles with
Wheel Mounts and
Tipping Levers
(pair)



P13650
Quick Release Axles
with Wheel Mounts
and Tipping Levers
(pair)

AXLES

WHEEL LOCKS



P60532
Wheel Locks
(pair)



P13135
Wheel Locks with
Extended Handle
(pair)



P60841-2
5" Casters
(pair)



P60800-2
5" Dual Locking
Casters
(pair)

SEATS *Seat works in all 4 positions



P60993*
18"Wx18"D
Comfortuff 1.5" waterfall foam
Front/Rear Open Seat
A-5"xB-8" opening



P60974
18"Wx18"D
Comfortuff sloped foam
Front Open Seat
A-4"xB-6.5" opening



P60701*
18"Wx18"D
Ensolute® 1" foam
Front/Rear Open Seat
A-4.55"xB-7.75" opening



P61058
18"Wx18"D
Ensolute® 2" waterfall foam
Front Open Contoured Seat
A-5.5"xB-8.25" opening



P61086
18"Wx18"D
Ensolute® 2" foam
Solid Seat



P60675
18"Wx18"D
Ensolute® 1" foam
Cloverleaf Seat
A-7.5"xB-9" oval opening



P60913*
18"Wx18"D
Ensolute® 2" waterfall foam
Front/Rear Open Seat
A-5.25"xB-8" opening



P61121
18"Wx20"D
Ensolute® 1" foam
Front/Rear Open Seat
A-4.5"xB-7.5" opening



P61122
18"Wx20"D
Ensolute® 1" foam
Solid Seat



PP60903
18"Wx20"D
Ensolute® 1" foam
Side Open Seat
A-4.5"xB-7.75" opening

ARMRESTS



P60903
20"Wx18"D
Ensolute® 1" foam
Front/Rear Open Seat
A-4.5"xB-7.75" opening



PP61122
20"Wx18"D
Ensolute® 1" foam
Solid Seat



P61038
20"Wx18"D
Comfortuff 1.5" waterfall foam
Front Open Seat
A-5"xB-8" opening



P60905
22"Wx18"D
Ensolute® 1" foam
Front/Rear Open Seat
A-4.5"xB-7.75" opening



P13278
18"D Left Hand
Armrest with Pad



P13277
18"D Right Hand
Armrest with Pad



P13663
20"D Left Hand
Armrest with Pad

LEG RESTS



P13664
20"D Right Hand
Armrest with Pad



P13665
Left Leg Rest



P13666
Right Leg Rest



P13582
Left Elevating Leg
Rest



P13583
Right Elevating Leg
Rest



PL13581
Left Gooseneck
Leg Rest



PR13581
Right Gooseneck
Leg Rest

600 OPTIONS

FOOT PLATES



P13667
18"W 1-pc. Foot
Plate/Leg Rest



P13668
20"W 1-pc. Foot
Plate/Leg Rest



P13669
22"W 1-pc. Foot
Plate/Leg Rest



PL11099
Left Foot Plate



PR11099
Right Foot Plate



PL11100
Left Foot Plate with
Heel Loop



PR11100
Right Foot Plate
with Heel Loop

BACKS



P13891
Left Oversized
Aluminum
Foot Plate



P13892
Right Oversized
Aluminum
Foot Plate



PL11101
Left Padded
Foot Plate



PR11101
Right Padded
Foot Plate



P13651
18"W Sling Back
with Stroller
Handles



P13652
18"W Solid Back



P13658
20"W Sling Back
with Stroller
Handles

BELTS



P13659
20"W Solid Back



P13661
22"W Sling Back
with Stroller
Handles



P13662
22"W Solid Back



PW60909
Waist Belt
(for 18"W frame only, 54"
circumference with 12"
overlap)



PW60884
Waist Belt
(for 20"W and 22"W frames
only, 66" and 68" circumfer-
ence with 12" overlap)



PT60884
Trunk Belt
(64", 66" and 68"
circumference with
12" overlap)



P60879
Calf Strap



P11093
Bodypoint®
Trunk Belt



P11102
Bodypoint®
Trunk Belt
(pair)



P11116
Bodypoint® Trunk
Belt & Waist Belt



P11112
Bodypoint®
XL Trunk Belt



P11113
Bodypoint®
Belt w/Quick
Release Knobs



P61081
Bodypoint®
Calf Strap
(only available with 18" back)



P11114
Bodypoint®
Knee Belt

POSITIONING AIDS



PL13574
Left Hand
Swing-Away
Adjustable Lateral



PR13574
Right Hand
Swing-Away
Adjustable Lateral



PL13618
Left Hand
Arm-Mounted Hip
Guide



PR13618
Right Hand
Arm-Mounted Hip
Guide



P61006
Abductor/Deflector
Large



P13670
Front
Anti-Tippers

PANS



P13840
18"Wx18"D
Pan/Hanger



P13841
18"Wx20"D
Pan/Hanger

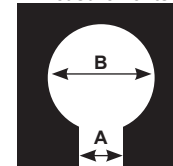


P13842
20"Wx18"D
Pan/Hanger

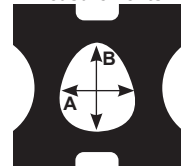


P13843
22"Wx18"D
Pan/Hanger

Seat Opening
Measurements



Cloverleaf Seat Opening
Measurements



full option details at
activeaid.com



600 with Four
5" Locking Casters



600 with 20" Wheels

full option details at
activeaid.com

SPECIFICATIONS

		18"Wx18"D Frame (158kg)	18"Wx20"D Frame	20"Wx18"D Frame	22"Wx18"D Frame
Weight Capacity		350 lbs.	350 lbs.	350 lbs.	350 lbs.
Seat Width		18" (45cm)	18" (45cm)	20" (50cm)	22" (55cm)
Width between Arm Rests	Armrest with Pad	22.25" (56cm)	22.25" (56cm)	24.25" (61cm)	26.25" (66cm)
	Armrest with Arm Troughs	20.25" (51cm)	20.25" (51cm)	22.25" (56cm)	24.25" (61cm)
Seat Depth		18" (45cm)	20" (50cm)	18" (45cm)	18" (45cm)
Seat Height Range From Floor to Top of Seat (transfer height)	Front to Back - 24" Wheels - 23"-21.25" (58-53cm)				
	5"rear casters - 23"-22.25" (58-56cm)				
Leg Rest Range				with Padded Footplate	
	Leg Rest	17.75"-18.75" (45-47cm)		16.5"-17.5" (41-44cm)	
	Gooseneck	14"-20.5" (35-52cm)		12.75"-19.25" (32-48cm)	
	Elevating - Up	17"-24" (43-60cm)		15.75"-22.75" (40-57cm)	
	Elevating - Down	16.5"-23.5" (41-59cm)		15.25"-22.25" (48-56cm)	
	One-Piece	19" (48cm)			
Usable Seat Depth w/Solid Back		18" (45cm)	20" (50cm)	18" (45cm)	18" (45cm)
Arm Height from Top of Seat	Armrest with Pad	8" (20cm)			
	Armrest with Arm Troughs	8.25" (20cm)			
Back Height From Top of Seat		16.5" (41cm)			
Gap between top of seat and bottom of back		8.5" (21cm)			
Seat to Back Angle (or Range) (Recline)		11°			
Under Seat Height Clearance		18.25" (46cm)			
Under Seat Width Clearance	with 24" Wheels	14" (35cm)	14" (35cm)	16" (40cm)	18" (45cm)
	with 5" Casters	15.75" (40cm)	15.75" (40cm)	17.75" (45cm)	19.75" (50cm)
Overall Width	with 24" Wheels	25.25" (64cm)	25.25" (64cm)	27.25" (69cm)	29.25" (74cm)
	with 5" Casters and Armrest w/Pad	22.5" (57cm)	22.5" (57cm)	24.5" (62cm)	26.5" (67cm)
	with 5" Casters and Armrest with Arm Troughs	26.5" (67cm)	26.5" (67cm)	28.5" (72cm)	30.5" (77cm)
Overall Length	Min. with 24" Wheels	42.5" (107cm)	44.25" (57cm)	42.5" (107cm)	42.5" (107cm)
	Min. with 5" Casters	41.5" (105cm)	43.5" (110cm)	41.5" (105cm)	41.5" (105cm)
Back of Unit to Start of Commode Opening	with 24" Wheels		15.5" (39cm)		
	with 5" Casters		14.75" (37cm)		
Turning Diameter Min. w/ 5" rear casters		42" (106cm)	44" (111cm)	44" (111cm)	45" (114cm)
Seat Used to Generate Specifications		#60905 22"Wx18"Dx2"H			



BARIATRIC- REHAB SHOWER/COMMODE CHAIR

- Complete Packages for Easier Ordering Available
- Stainless Steel Frame
- Several Seat Options Available
- Three Mobility Choices:
Four 6" Casters, 20" or 24" Rear Wheels
- Six Seat and Frame Sizes:
20"Wx20"D, 22"Wx20"D,
24"Wx20"D, 26"Wx20"D,
28"Wx20"D, 30"Wx20"D
- 600 lb. (272kg) Weight Capacity

The 720 boasts a 600 lb. weight limit that will give both client and caregiver the safety, stability and access needed for bariatric clients.

Many features and options of this rehab shower/commode chair help fulfill the needs of rehabilitating patients, long-term care or homebound clients. The stainless steel frame combines high strength with low maintenance, making the 720 the right choice shower/commode for bariatric clients.

FRAMES



P13598
20"Wx20"D
Stainless Steel
Frame



P13599
22"Wx20"D
Stainless Steel
Frame



P13600
24"Wx20"D
Stainless Steel
Frame



P13601
26"Wx20"D
Stainless Steel
Frame



P13602
28"Wx20"D
Stainless Steel
Frame



P13603
30"Wx20"D
Stainless Steel
Frame



P13670
Front
Anti-Tippers

WHEELS/REAR CASTERS



P13283-2
6" Locking
Casters
(pair)



P13860
20" Wheels
(pair)



P13863
20" Pneumatic
Street Tread
Wheels
(pair)



P13862
24" Wheels
(pair)



P13864
24" Pneumatic
Street Tread
Wheels
(pair)



P13865
24" Flat Free Street
Tread Wheels
(pair)



P13855
20" PVC Handrims
(replaces standard
handrims, pair)

AXLES



P13857
24" PVC Handrims
(replaces standard
handrims, pair)



P13769
Bolted Axles with
Tipping Levers
(pair)



P60532
Wheel Locks
(pair)



P13135
Wheel Locks with
Extended Handle
(pair)

FRONT CASTERS



P60780-2
6" Casters
(pair)



P13283-2
6" Locking Casters
(pair)

SEATS



P60886
20"Wx20"D
Ensolute® 1.5" foam
Race Track Oval Seat
A-7.75"xB-12.75" opening



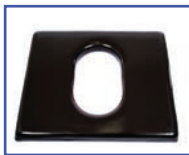
P61117
20"Wx20"D
Ensolute® 1" foam
Front/Rear Open Seat
A-4.5"xB-7.75" opening



P60887
22"Wx20"D
Ensolute® 1.5" foam
Race Track Oval Seat
A-7.75"xB-12.75" opening



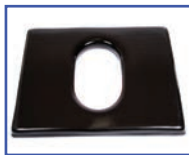
P61118
22"Wx20"D
Ensolute® 1" foam
Front/Rear Open Seat
A-4.5"xB-7.75" opening



P60888
24"Wx20"D
Ensolute® 1.5" foam
Race Track Oval Seat
A-7.75"xB-12.75"

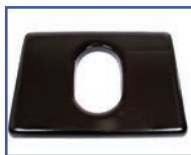


P61119
24"Wx20"D
Ensolute® 1" foam
Front/Rear Open Seat
A-4.5"xB-7.75" opening



P60889
26"Wx20"D
Ensolute® 1.5" foam
Race Track Oval Seat
A-7.75"xB-12.75"

ARMRESTS



P61110
28"Wx20"D
Ensolute® 1.5" foam
Race Track Oval Seat
A-7.75"xB-12.75"



P61111
30"Wx20"D
Ensolute® 1.5" foam
Race Track Oval Seat
A-7.75"xB-12.75"



P13584
Left Hand Armrest
with Pad



P13585
Right Hand Armrest
with Pad



P13586
Left Hand Armrest
with Arm Trough



P13587
Right Hand Armrest
with Arm Trough

LEG RESTS



PL13581
Left Gooseneck
Leg Rest



PR13581
Right Gooseneck
Leg Rest



P13582
Left Elevating Leg
Rest



P13583
Right Elevating Leg
Rest



P13196
20"W 1-pc. Foot
Plate/Leg Rest



P13184
22"W 1-pc. Foot
Plate/Leg Rest



P13197
24"W 1-pc. Foot
Plate/Leg Rest

LEG RESTS



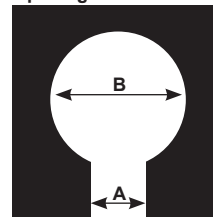
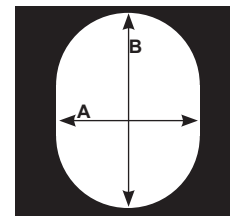
P13198
26"W 1-pc. Foot
Plate/Leg Rest



P13579
28"W 1-pc. Foot
Plate/Leg Rest



P13580
30"W 1-pc. Foot
Plate/Leg Rest

Front/Rear Seat
Opening MeasurementsRace Track Seat Opening
Measurements

FOOT PLATES



PL11099
Left Foot Plate



PR11099
Right Foot Plate



PL11100
Left Foot Plate with
Heel Loop



PR11100
Right Foot Plate
with Heel Loop



P13891
Left Oversized
Aluminum
Foot Plate



P13892
Right Oversized
Aluminum
Foot Plate



PL11101
Left Padded
Foot Plate

BACKS



P11101
Right Padded
Foot Plate



P13592
20"W Contoured
Solid Back



P13593
22"W Solid Back



P13594
24"W Solid Back



P13595
26"W Solid Back



P13596
28"W Solid Back



P13597
30"W Solid Back

BELTS



PT60884
Trunk Belt
(66", 68", 72", 74" and 76"
circumference with
12" overlap)



PW60884
Waist Belt
(for 20"W, 22"W and 24"W
frames only, 66", 68" and 70"
circumference with 12" overlap)



PW11095
Waist Belt
(for 26"W frame only, 76"
circumference with
12" overlap)



P11093
Bodypoint®
Trunk Belt
(for 20"W and 22"W frame
only, 48" circumference
with 12" overlap)



P11102
Bodypoint®
Trunk Belt
(for 20"W and 22"W frame
only, pair)



P11116
Bodypoint®
Trunk Belt &
Waist Belt
(for 20"W and 22"W
frames only)



P11112
Bodypoint®
XL Trunk Belt
(for 24"W and 26"
frame only)

PANS



P11113
Bodypoint®
Belt w/Quick
Release Knobs
(for 20"W and 22" frame only)



P13844
20"Wx20"D
Pan/Hanger



P13845
22"Wx20"D
Pan/Hanger



P13846
24"Wx20"D
Pan/Hanger



P13847
26"Wx20"D
Pan/Hanger



P13848
28"Wx20"D
Pan/Hanger



P13849
30"Wx20"D
Pan/Hanger



720 with Options



720 with Options

full option details at
activeaid.com

SPECIFICATIONS

	20"Wx20"D Frame	22"Wx20"D Frame	24"Wx20"D Frame	26"Wx20"D Frame	28"Wx20"D Frame	30"Wx20"D Frame
Weight Capacity (272kg)	600 lbs.	600 lbs.	600 lbs.	600 lbs.	600 lbs.	600 lbs.
Seat Width	20" (50cm)	22" (55cm)	24" (60cm)	26" (66cm)	28" (71cm)	30" (76cm)
Width between Arm Rests						
Armrest with Pad	20" (50cm)	22" (55cm)	24" (60cm)	26" (66cm)	28" (71cm)	30" (76cm)
Armrest with Arm Troughs	18" (45cm)	20" (50cm)	22" (55cm)	24" (60cm)	26" (66cm)	28" (71cm)
Seat Depth	20" (50cm)	20" (50cm)	20" (50cm)	20" (50cm)	20" (50cm)	20" (50cm)
Seat Height Range From Floor to Top of Seat (transfer height)	Front to Back - 20" Wheels - 22.5"-22" (57-55cm) 6" rear casters - 22.5"-22" (57-55cm) <u>with Padded Footplate</u>					
Leg Rest Range						
Gooseneck	13.5"-21" (34-53cm)					
Elevating - Up	16"-23" (40-58cm)					
Elevating - Down	16.75"-23.75" (42-60cm)					
One-Piece				18" (45cm)		
Usable Seat Depth w/Solid Back	20" (50cm)	20" (50cm)	20" (50cm)	20" (50cm)	20" (50cm)	20" (50cm)
Arm Height from Top of Seat						
Armrest with Pad				7.5" (19cm)		
Armrest with Arm Troughs				7.75" (19cm)		
Back Height From Top of Seat				16" (40cm)		
Gap between top of seat and bottom of back				8" (20cm)		
Seat to Back Angle (or Range) (Recline)				12°		
Under Seat Height Clearance				18.5"		
Under Seat Width Clearance	16" (40cm)	17" (43cm)	18" (45cm)	20" (50cm)	22" (55cm)	24" (60cm)
Overall Width						
w/20" Wheels	28.5" (72cm)	30.5" (77cm)	32.5" (82cm)	34.5" (87cm)	36.5" (92cm)	38.5" (97cm)
w/6" Casters and Armrest w/Pad	24.25" (61cm)	26.25" (66cm)	28.25" (71cm)	30.25" (76cm)	32.25" (81cm)	34.25" (86cm)
w/6" Casters and Armrest with Arm Troughs	27.5" (69cm)	29.5" (74cm)	31.5" (80cm)	33.5" (85cm)	35.5" (90cm)	37.5" (95cm)
Overall Length						
Min. with 20" Wheels				42" (106cm)		
Min. with 6" Casters				41.5" (105cm)		
Back of Unit to Start of Commode Opening						
with 20" Wheels				13.75" (34cm)		
with 6" Casters				13.25" (33cm)		
Turning Diameter with 6" rear casters	45" (114cm)	47" (119cm)	49" (124cm)	51" (129cm)	53" (134cm)	55" (139cm)
Seat Used to Generate Specifications				#61111 30"Wx20"Dx2.5"H		



FOLDING- REHAB SHOWER/COMMODE CHAIR

- Complete Packages for Easier Ordering Available
- Easy to Fold and Transport
- Stainless Steel Frame
- 350 lb. (158kg) Weight Capacity
- Several Seat Options Available

The 922 is a Folding Rehab Shower/Commode Chair. The folding capability makes storage straightforward and travel possible with this easily maneuverable rehab shower/commode chair.

The padded, ergonomically correct configuration of the seat emphasizes pressure relief and proper sitting form. At the same time, the Stainless Steel frame provides a non-corrosive chair that was developed to address the full range of necessities for both user and caregiver.

FRAMES



P13559
18Wx18"D
Stainless Steel
Frame

WHEELS



P13861
22" Wheels
(pair)



P13862
24" Wheels
(pair)



P13864
24" Pneumatic
Street Tread
Wheels
(pair)



P13865
24" Flat Free Street
Tread Wheels
(pair)



P13856
22" PVC Handrims
(replaces standard
handrims, pair)



P13857
24" PVC Handrims
(replaces standard
handrims, pair)

AXLES



P13639
Bolted Axles
(pair)



P13640
Quick Release
Axles
(pair)



P60532
Wheel Locks
(pair)



P13135
Wheel Locks with
Extended Handle
(pair)



P60841-2
5" Casters
(pair)



P60800-2
5" Dual Locking
Casters
(pair)

WHEEL LOCKS

CASTERS

SEATS



P60993
18"Wx18"D
Comfortuff 1.5" waterfall
foam
Front Open Seat
A-5"xB-8" opening



P60974
18"Wx18"D
Comfortuff sloped foam
Front Open Seat
A-4"xB-6.5" opening



P61120
18"Wx18"D
Ensolite® 2" dual density
foam w/coccyx notch
Front Open Seat
A-3"xB-5.25" opening



P61058
18"Wx18"D
Ensolite® 2" waterfall foam
Front Open Contoured Seat
A-5.5"xB-8.25" opening



P61086
18"Wx18"D
Ensolite® 2" foam
Solid Seat



P60675
18"Wx18"D
Ensolite® 1" foam
Cloverleaf Seat
A-7.5"xB-9" oval opening



P60701
18"Wx18"D
Ensolite® 1" foam
Front Open Seat
A-4.55"xB-7.75" opening

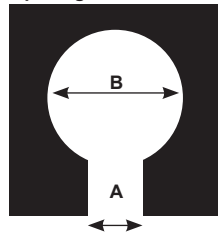


P60850
18"Wx18"D
Ensolite® 1" waterfall foam
Front Open Seat
A-5"xB-8" opening

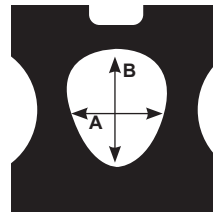


P60913
18"Wx18"D
Ensolite® 2" waterfall foam
Front Open Seat
A-5.25"xB-8" opening

Front Open Seat
Opening Measurements



Cloverleaf Seat Opening
Measurements



ARMRESTS



P13563
Left Hand
Height-Adjustable
Armrest



P13564
Right Hand
Height-Adjustable
Armrest



P13565
Left Hand Flip-Up
Armrest



P13566
Right Hand Flip-Up
Armrest

LEG RESTS



PL13569
Left Gooseneck
Leg Rest



PR13569
Right Gooseneck
Leg Rest



P13794
Left Elevating
Leg Rest



P13795
Right Elevating
Leg Rest



PL13570
Left Low-Mount
Leg Rest



PR13570
Right Low-Mount
Leg Rest

FOOT PLATES



PL11099
Left Foot Plate



PR11099
Right Foot Plate



PL11100
Left Foot Plate with
Heel Loop



PR11100
Right Foot Plate
with Heel Loop



P13891
Left Oversized
Aluminum
Foot Plate



P13892
Right Oversized
Aluminum
Foot Plate



PL11101
Left Padded
Foot Plate

BACKS



PR11101
Right Padded
Foot Plate



P11098
18"W Solid Back



P13866
18"W Sling Back



PW60909
Waist Belt
(54" circumference with
12" overlap)



PT60884
Trunk Belt
(64" circumference with
12" overlap)



P60879
Calf Strap



P11093
Bodypoint®
Trunk Belt

BELTS



P11102
Bodypoint®
Trunk Belt (pair)



P11111
Bodypoint® Trunk
Belt & Waist Belt



P11112
Bodypoint® XL
Trunk Belt



P11113
Bodypoint® Belt
w/Quick Release
Knobs



P61081
Bodypoint®
Calf Strap



P11114
Bodypoint®
Knee Belt

POSITIONING AIDS



PL13574
Left Hand
Swing-Away
Adjustable Lateral



PR13574
Right Hand
Swing-Away
Adjustable Lateral



P61006
Abductor/Deflector
Large



P13573
18"Wx18"W
Pan/Hanger

PANS



922 with Options-Folded



922 with Options

full option details at
activeaid.com

SPECIFICATIONS

Weight Capacity		350 lbs. (158kg)	
Seat Width		18" (45cm)	
Width between Arm Rests	Armrest with Pad	19.5" (49cm)	
	Armrest with Arm Troughs	17.5" (44cm)	
	Height Adjustable	17.5" (44cm)	
Seat Depth		18" (45cm)	
Seat Height Range From Floor to Top of Seat (transfer height)		22.5" (57cm)	
Leg Rest Range			<u>with Padded Footplate</u>
	Low-Mount	17.75"-23.25" (45-59cm)	16.5"-22" (41-55cm)
	Gooseneck	16"-21" (40-53cm)	14.75"-19.75" (37-50cm)
	Elevating - Up	17"-24" (43-60cm)	15.75"-22.75" (40-57cm)
	Elevating - Down	18.5"-25.5" (46-64cm)	17.25"-24.25" (43-60cm)
Usable Seat Depth w/Solid Back		18" (45cm)	
Arm Height from Top of Seat	Armrest with Pad	7.5" (19cm)	
	Armrest with Arm Troughs	7.75" (19cm)	
	Height Adjustable	3"-9" (7-22cm)	
Back Height From Top of Seat		15.5" (39cm)	
Gap between top of seat and bottom of back		7.5" (19cm)	
Maximum Back Slack		2" (5cm)	
Seat to Back Angle (or Range) (Recline)		6°	
Under Seat Height Clearance		17.75" (45cm)	
Under Seat Width Clearance		15" (38cm)	
Overall Width		14.25" (36cm)	
	Folded	25.75" (65cm)	
Overall Length	Unfolded	46" (116cm)	
	Min. with 22" Wheels	47" (119cm)	
Back of Unit to Start of Commode Opening	Min. with 22" Wheels	14.75" (37cm)	
	Min. with 24" Wheels	15.75" (40cm)	
Turning Diameter	Min. with 22" Wheels	50" (127cm)	
Seat Used to Generate Specifications		#61120 18"Wx18"Dx2.75"H	



SEAT HEIGHT/SLOPE ADJUSTABLE SEAT- REHAB SHOWER/COMMODE CHAIR

- Complete Packages for Easier Ordering Available
- Stainless Steel Frame
- Several Seat Options Available
- Seat Height and Slope Adjustment
- Three Frame Sizes:
18"Wx18"D, 20"Wx18"D,
22"Wx18"D
- 350 lb. (158kg) Weight Capacity

The 1100 is a Rehab Shower/Commode Chair that can be configured with a height/slope adjustable seat when ordered with the 24" rear wheels. This unit has modular components to help alleviate the need for custom designs, and its consequent added costs and delivery time.

The seat height can go low enough for foot propulsion, and the height adjustment can enable safer transfers. These options make the 1100 an easily adaptable rehab shower/commode chair for multi-user facilities and group homes.

FRAMES



P13721
18"Wx18"D
Stainless Steel
Frame



P13722
20"Wx18"D
Stainless Steel
Frame



P13723
22"Wx18"D
Stainless Steel
Frame

WHEELS/REAR CASTERS



P13854
5" Dual Locking
Casters
(pair)



P13862
24" Wheels
(pair)



P13864
24" Pneumatic
Street Tread
Wheels
(pair)



P13865
24" Flat Free Street
Tread Wheels
(pair)



P13857
24" PVC Handrims
(replaces standard
handrims, pair)

AXLES



P13708
Bolted Axles with
Tipping Levers
(pair)



P13707
Quick Release
Axles with Tipping
Levers
(pair)



P60532
Wheel Locks
(pair)



P13724
Wheel Locks with
Offset Handle
(pair)



P60841-2
5" Casters
(pair)



P60800-2
5" Dual Locking
Casters
(pair)

WHEEL LOCKS

FRONT CASTERS

SEATS

*Seat works in all 4 positions



P60993*
18"Wx18"D
Comfortuff 1.5" waterfall
foam
Front/Rear Open Seat
A-5"xB-8" opening



P60974
18"Wx18"D
Comfortuff sloped foam
Front Open Seat
A-4"xB-6.5" opening



P60850*
18"Wx18"D
Ensolite® 1" waterfall foam
Front/Rear Open Seat
A5"xB-8" opening



P60913*
18"Wx18"D
Ensolite® 2" waterfall foam
Front/Rear Open Seat
A5.25"xB-8" opening



P61086
18"Wx18"D
Ensolite® 2" foam
Solid Seat



P61058
18"Wx18"D
Ensolite® 2" waterfall foam
Front Open Contoured Seat
A-5.5"xB-8.25" opening



P61038
20"Wx18"D
Comfortuff
1.5" waterfall foam
Front Open Seat
A-5"xB-8" opening

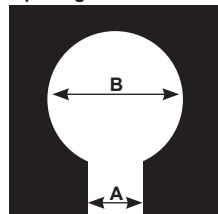


P60903
20"Wx18"D
Ensolite® 1" foam
Front/Rear Open Seat
A-4.5"xB-7.75" opening



P60905
22"Wx18"D
Ensolite® 1" foam
Front/Rear Open Seat
A-4.5"xB-7.75" opening

Front/Rear Open Seat
Opening Measurements



ARMRESTS



P13715
Left Hand Armrest
with Pad



P13716
Right Hand Armrest
with Pad



P13717
Left Hand with
Arm Trough



P13718
Right Hand with
Arm Trough



P13615
Left Hand
Height-Adjustable
Armrest



P13616
Right Hand
Height-Adjustable
Armrest

1100 OPTIONS

LEG RESTS



PL13725
Left Leg Rest



PR13725
Right Leg Rest



P13571
Left Elevating
Leg Rest



P13572
Right Elevating
Leg Rest



PL11099
Left Foot Plate



PR11099
Right Foot Plate



PL11100
Left Foot Plate with
Heel Loop

FOOT PLATES

FOOT PLATES



PR11100
Right Foot Plate
with Heel Loop



P13891
Left Oversized
Aluminum
Foot Plate



P13892
Right Oversized
Aluminum
Foot Plate



PL11101
Left Padded
Foot Plate



PR11101
Right Padded
Foot Plate



P13690
18"W Sling Back
with Stroller
Handles



P13692
18"W Sling Back
with Stroller
Handles
(adjustable depth)

BACKS



P13691
18"W Solid Back



P13693
18"W Solid Back
(adjustable depth)



P13710
20"W Sling Back
with Stroller
Handles



P13713
20"W Solid Back



P13712
22"W Sling Back
with Stroller
Handles



P13714
22"W Solid Back

BELTS



PW60909
Waist Belt
(for 18"W frame only, 54"
circumference with
12" overlap)



PW60884
Waist Belt
(for 20"W and 22"W
frame only, 66" and 68"
circumference with
12" overlap)



PT60884
Trunk Belt
(64", 66" and 68"
circumference with
12" overlap)



P60879
Calf Strap



P11093
Bodypoint®
Trunk Belt



P11102
Bodypoint®
Trunk Belt (pair)



P11116
Bodypoint® Trunk
Belt & Waist Belt

POSITIONING AIDS



P11112
Bodypoint® XL
Trunk Belt



P11113
Bodypoint® Belt
w/Quick Release
Knobs



P61081
Bodypoint®
Calf Strap



P11114
Bodypoint®
Knee Belt



PL13574
Left Hand
Swing-Away
Adjustable Lateral



PR13574
Right Hand
Swing-Away
Adjustable Lateral



P61006
Abductor/Deflector
Large

PANS



P13834
18"Wx18"D
Pan/Hanger



P13836
20"Wx18"D
Pan/Hanger



P13838
22"Wx18"D
Pan/Hanger

full option details at
activeaid.com



1100 with Four 5"
Locking Casters

full option details at
activeaid.com

SPECIFICATIONS

		18" Frame	20" Frame	22" Frame
Weight Capacity		350 lbs. (158kg)	350 lbs. (158kg)	350 lbs. (158kg)
Seat Width		18" (45cm)	20" (50cm)	22" (55cm)
Width between Arm Rests		20.25" (51cm)	22.25" (56cm)	24.25" (61cm)
		18.25" (46cm)	20.25" (51cm)	22.25" (56cm)
		18.75" (47cm)	20.75" (52cm)	22.75" (57cm)
Seat Depth		18" (45cm)	18" (45cm)	18" (45cm)
Adjustable Seat Height Range From Floor to Top of Seat (transfer height)		24" wheels 5" casters	23.75"-20.75" (60-52cm) with 23"-18" (58-45cm)-Rear Slope 23.75"-20.75" (60-52cm)	
Leg Rest Range		Gooseneck Elevating - Up Elevating - Down	15.75"-19.75" (40-50cm) 16.5"-23.5" (41-59cm) 16.5"-23.5" (41-59cm)	with Padded Footplate 14.5"-18.5" (36-46cm) 15.25"-22.25" (38-56cm) 15.25"-22.25" (38-56cm)
Usable Seat Depth w/Solid Back			18" (45cm)	18" (45cm)
Arm Height from Top of Seat		Armrest with Pad Armrest with Arm Troughs Height Adjustable	18" (45cm)	18" (45cm)
Back Height From Top of Seat				7.75" (19cm)
Gap between Top of Seat and Bottom of Back				8" (20cm)
Seat to Back Angle (or Range) (Recline)				4"-12" (10-30cm)
Adjustable Depth Back Range				18.5" (46cm)
Under Seat Height Clearance		with 24" Wheels with 5" Casters		10.5" (26cm)
Under Seat Width Clearance		with 24" Wheels with 5" Casters		13°
Overall Width		with 24" Wheels with 5" Casters and Armrest w/Pad with 5" Casters and Height Adjustable Armrests with 5" Casters and Armrest with Arm Troughs	15"-18" (38-45cm) min. tilt/13.25"-16.25" (33-41cm) max. tilt 15"-18" (38-45cm)	2.5" (6cm)
Overall Length		Min. with 24" Wheels Min. with 5" Casters	14.5" (25cm) 15.75" (40cm) 25.25" (64cm) 24.25" (64cm) 22" (55cm) 28.25" (71cm) 44" (111cm) 41.5" (105cm)	16.5" (41cm) 17.75" (45cm) 27.25" (69cm) 26.25" (66cm) 24" (60cm) 30.25" (76cm) 44" (111cm) 41.5" (105cm)
Back of Unit to Start of Commode Opening		with 24" Wheels with 5" Casters		18.5" (46cm) 19.75" (50cm) 29.25" (74cm) 28.25" (71cm) 26" (66cm) 32.25" (81cm) 44" (111cm) 41.5" (105cm)
Turning Diameter Min. w/ 5" rear casters			48" (121cm)	50" (127cm)
Seat Used to Generate Specifications			#60993 18"Wx18"Dx2.5"H	



TILT-ADOLESCENT SHOWER/COMMODE CHAIR

- Complete Packages for Easier Ordering Available
- Stainless Steel Frame
- Single frame accepts all seat sizes
- Tilt Adjustment
- Four Seat Sizes:
12"Wx12"D, 14"Wx14"D,
16"Wx16"D, 18"Wx18"D
- Perfect for Youth and Small Adults
- up to 350 lb. (158kg)
Weight Capacity (dependent on seat selection)

The 1218 adolescent tilt-in-space shower/commode chair was designed for years of use and with growth in mind. A single stainless steel frame and non-corrosive components can accept multiple seat width/depth combinations from 12-18" that can be easily swapped as a child grows.

The gravity assist tilt system performs infinite adjustments up to 29° easily, even under load. This chair can be configured for maximum support with a system comprised of the seat, adjustable depth, and slack back, padded armrests, hip guides, lateral supports and head support.

FRAMES

**P13623**

18"Wx18"D Frame

full option details at
activeaid.com

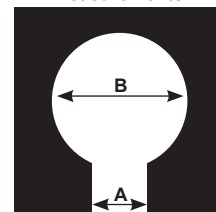
CASTERS

**P60800-4**5" Dual Locking
Casters
(2 pair)**P13770**5" Casters (pair) and
5" Dual Locking
Casters (pair)

SEATS

**P11090**12"Wx12"D
Ensolite® 1" foam
Front/Rear Open Seat
A-2.5"xB-4.5" opening**P11091**14"Wx14"D
Ensolite® 1" foam
Front/Rear Open Seat
A-3.5"xB-5.5" opening**P11092**16"Wx16"D
Ensolite® 1" foam
Front/Rear Open Seat
A-4"xB-6.5" opening**P13494**18"Wx18"D
Comfortuff 1.5" waterfall foam
Front/Rear Open Seat
A-5"xB-8" opening**P13617**18"Wx18"D
Ensolite® 2" foam
Solid Seat**Weight Capacity for Seats**

12"Wx12"D - 150lbs. (68kg)
 14"Wx14"D - 250lbs. (113kg)
 16"Wx16"D - 300lbs. (136kg)
 18"Wx18"D - 350lbs. (158kg)

**Seat Opening
Measurements**

ARMRESTS

**P13821**Left Hand Armrest
with Pad**P13822**Right Hand Armrest
with Pad**P13823**Left Hand Armrest
with Arm Trough**P13824**Right Hand Armrest
with Arm Trough**P13615**Left Hand
Height-Adjustable
Armrest**P13616**Right Hand
Height-Adjustable
Armrest

LEGRESTS

**PL13610**Left Pediatric Leg
Rest**PR13610**Right Pediatric Leg
Rest**P13582**Left Elevating
Leg Rest**P13583**Right Elevating
Leg Rest**PL13581**Left Gooseneck
Leg Rest**PR13581**Right Gooseneck
Leg Rest

FOOT PLATES

**PL11099**

Left Foot Plate

**PR11099**

Right Foot Plate

**PL11100**Left Foot Plate
with Heel Loop**PR11100**Right Foot Plate
with Heel Loop**P13891**Left Oversized
Aluminum Foot Plate**P13892**Right Oversized
Aluminum Foot Plate**PL11101**Left Padded
Foot Plate**PR11101**Right Padded
Foot Plate

BACKS

**P13867**

18"W Adjustable
Sling Back

**P11107**

18"W Solid Back

**P11104**

18"W Solid Back
Full Length w/Center Pad
(adjustable depth)

BELTS

**PW60884**

Waist Belt
(64" circumference with
12" overlap)

**PT60884**

Trunk Belt
(64" circumference with
12" overlap)

**P11093**

Bodypoint®
Trunk Belt

**P11102**

Bodypoint®
Trunk Belt (pair)

**P11116**

Bodypoint® Trunk
Belt & Waist Belt

**P11113**

Bodypoint® Belt
w/Quick Release
Knobs

**P61081**

Bodypoint® Calf
Strap

**P11114**

Bodypoint® Knee
Belt

**P11117**

Calf Strap

POSITIONING AIDS

**PL13574**

Left Hand
Swing-Away
Adjustable Lateral

**PR13574**

Right Hand
Swing-Away
Adjustable Lateral

**PL13618**

Left Hand
Arm-Mounted
Hip Guide

**PR13618**

Right Hand
Arm-Mounted
Hip Guide

**P61056**

Abductor/Deflector
Small
(for 12" and 14" seats)

**P60756**

Abductor/Deflector
Medium
(for 16" seats)

**P61006**

Abductor/Deflector
Large
(for 18" seats)

PANS

**P13619**

Pan/Hanger-Fits
12"W and 14"W
Frame

**P13620**

Pan/Hanger-Fits
16"W and 18"W
Frame

HEAD SUPPORTS

**P11105**

Head Support
Small Foam
(only available for P11104)

**P13622**

Head Support
Small

**P13621**

Head Support
Large



1218 with Options

1218 with Options



full option details at
activeaid.com

SPECIFICATIONS

Weight Capacity (depending on seat size)

Seat Width

Width between Arm Rests

Armrest with Pad

Armrest with Arm Troughs

Height Adjustable

Seat Depth

Seat Height Range From Floor to Top of Seat (transfer height)

Leg Rest Range

Pediatric

Gooseneck

Elevating - Up

Elevating - Down

Usable Seat Depth w/Solid Back

Arm Height from Top of Seat

Armrest with Pad

Armrest with Arm Troughs

Height Adjustable

Back Height From Top of Seat

Gap between top of seat and bottom of back

Maximum Back Slack

Seat to Back Angle (or Range) (Recline)

Tilt Range

Adjustable Depth Back Range

Head Support Height Range-top of Seat to bottom of Cervical Support

Under Seat Height Clearance

Under Seat Width Clearance

Overall Width

Armrest with Pad

Armrest with Arm Troughs

Height Adjustable

Minimum

Max Tilted w/Headrest & Legrest Ext. 60"

Overall Length

Back of Unit to Start of Commode Opening

Turning Diameter

Seat Used to Generate Specifications

150lbs. (68kg), 250lbs. (113kg), 300lbs. (136kg), 350 lbs. (158kg)

12" (30cm), 14" (35cm), 16" (40cm), 18" (45cm)

20.75" (52cm)

18.75" (47cm)

18.25" (47cm)

12" (30cm), 14" (35cm), 16" (40cm), 18" (45cm)

23.75" (60cm) Front, 23" (58cm) Rear

with Padded Footplate

9"-15.25" (22-38cm)

7.75"-14" (19-35cm)

14.75"-20.75" (37-52cm)

13.5"-19.5" (34-49cm)

18"-25" (45-63cm)

16.75"-23.75" (42-60cm)

16"-23" (40-58cm)

14.75"-21.75" (37-55cm)

12" (30cm), 14" (35cm), 16" (40cm), 18" (40cm)

8" (20cm)

8.25" (20cm)

8"-9" (20-22cm)

20" (50cm)

2" (5cm)

4" (10cm)

14°

5°- 29°

4.5" (11cm)

19.5"-28" (49-71cm)

19.5" (49cm)

18.75" (47cm)

25.5" (64cm)

29" (73cm)

25" (63cm)

39" (99cm)

18.5" (46cm)

42" (53cm)

#60927 14"Wx14"Dx1.5"H



TILT- REHAB SHOWER/COMMODE CHAIR

- Complete Packages for Easier Ordering Available
- Stainless Steel Frame
- Several Seat Options Available
- Tilt Adjustment
- 350 lb. (158kg) Weight Capacity
- Four Frame Sizes:
16"Wx18"D, 18"Wx18"D,
20"Wx18"D and 22"Wx18"D
- Seven Seat Sizes:
16"Wx18"D, 18"Wx18"D,
18"Wx20"D, 20"Wx18"D,
20"Wx20"D, 22"Wx18"D
and 22"Wx20"D

The 285 is a gravity assist tilt-in-space shower/commode chair. Available in multiple frame widths from 16"-22" and the option of 4 casters or 24" rear wheels make this is a versatile chair for the home or rehab environment.

Multiple features combine to provide support, comfort, and pressure relief, along with the other benefits of tilt-in-space technology.

FRAMES



P13635
16"Wx18"D
Stainless Steel
Frame



P13636
18"Wx18"D
Stainless Steel
Frame



P13637
20"Wx18"D
Stainless Steel
Frame



P13638
22"Wx18"D
Stainless Steel
Frame



P60800-2
5" Dual Locking
Casters
(pair)



P13862
24" Wheels
(pair)



P13864
24" Pneumatic
Street Tread
Wheels
(pair)

AXLES

WHEEL LOCKS

FRONT CASTERS



P13865
24" Flat Free Street
Tread Wheels
(pair)



P13857
24" PVC Handrims
(replaces standard
handrims, pair)



P13688
Bolted Axles with
Tipping Levers
(pair)



P60532
Wheel Locks
(pair)



P13135
Wheel Locks with
Extended Handle
(pair)



P60841-2
5" Casters
(pair)



P60800-2
5" Dual Locking
Casters
(pair)

SEATS



P61124
16"Wx18"D
Ensolute® 1" foam
Front/Rear Open Seat
A-4.75"xB-7.75" opening



P60993
18"Wx18"D
Comfortuff 1.5" waterfall foam
Front/Rear Open Seat
A-5"xB-8" opening



P60974
18"Wx18"D
Comfortuff sloped foam
Front Open Seat
A-4"xB-6.5" opening



P60802
18"Wx18"D
Ensolute® 1.25" foam
Front Open Ring Seat
A-4.5"xB-7.75" opening



P61086
18"Wx18"D
Ensolute® 2" foam
Solid Seat



P61121
18"Wx20"D
Ensolute® 1" foam
Front Open Seat
A-4.5"xB-7.5" opening



P61038
20"Wx18"D
Comfortuff
1.5" waterfall foam
Front Open Seat
A-5"xB-8" opening



P60903
20"Wx18"D
Ensolute® 1" foam
Front/Rear Open Seat
A-4.5"xB-7.75" opening



PP61122
20"Wx18"D
Ensolute® 1" foam
Solid Seat



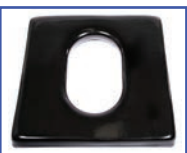
P60886
20"Wx20"D
Ensolute® 1.5" foam
Race Track Oval Seat
A-7.75"xB-12.75" opening



P61123
20"Wx20"D
Ensolute® 1" waterfall foam
Front/Rear Open Seat
A-4.5"xB-7.75" opening



P60905
22"Wx18"D
Ensolute® 1" foam
Front/Rear Open Seat
A-4.5"xB-7.75" opening



P60887
22"Wx20"D
Ensolute® 1.5" foam
Race Track Oval Seat
A-7.75"xB-12.75" opening



P61126
22"Wx20"D
Ensolute® 1" waterfall foam
Front/Rear Open Seat
A-4.5"xB-7.75" opening

ARMRESTS



P13611
Left Hand Armrest
with Pad



P13612
Right Hand Armrest
with Pad



P13613
Left Hand Armrest
with Arm Trough



P13614
Right Hand Armrest
with Arm Trough



P13615
Left Hand
Height-Adjustable
Armrest



P13616
Right Hand
Height-Adjustable
Armrest

LEG RESTS

FOOT PLATES



PL13581
Left Gooseneck
Leg Rest



PR13581
Right Gooseneck
Leg Rest



P13582
Left Elevating
Leg Rest



P13583
Right Elevating
Leg Rest



PL11099
Left Foot Plate



PR11099
Right Foot Plate



PL11100
Left Foot Plate with
Heel Loop

FOOT PLATES



PR1100
Right Foot Plate
with Heel Loop



P13891
Left Oversized
Aluminum
Foot Plate



P13892
Right Oversized
Aluminum
Foot Plate



PL11101
Left Padded
Foot Plate



PR11101
Right Padded
Foot Plate



P61139
16\"/>



P11110
16\"/>



P60877
18\"/>



P11107
18\"/>



P60878
20\"/>



P11108
20\"/>



P61140
22\"/>



P11109
22\"/>

BELTS



PW60884
Waist Belt
(62\", 64\", 66\", or 68\"/>



PT60910
Trunk Belt
(for 16\"/>



PT61180
Trunk Belt
(for 20\"/>



P60879
Calf Strap



P11093
Bodypoint®
Trunk Belt



P11102
Bodypoint®
Trunk Belt (pair)



P11116
Bodypoint® Trunk
Belt & Waist Belt

POSITIONING AIDS



P11112
Bodypoint® XL
Trunk Belt



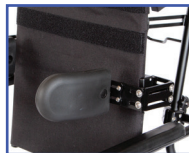
P11113
Bodypoint® Belt
w/Quick Release
Knobs



P61081
Bodypoint®
Calf Strap



P11114
Bodypoint®
Knee Belt



PL13574
Left Hand
Swing-Away
Adjustable Lateral



PR13574
Right Hand
Swing-Away
Adjustable Lateral



PL13618
Left Hand
Arm-Mounted
Hip Guide

PANS



PR13618
Right Hand
Arm-Mounted
Hip Guide



P61006
Abductor/Deflector
Small



P13831
Pan/Hanger for
Ring and
Contoured Seats



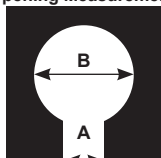
P13832
Pan/Hanger for
Front/Rear, & Race
Track Oval Seats



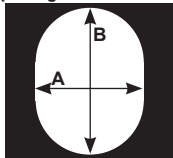
P13621
Head Support
Large

HEAD SUPPORTS

Front Open Seat
Opening Measurements



Race Track Oval
Opening Measurements





285 in Tilt



PKG207 Package #5 - 18"W x 18"D

full option details at
activeaid.com

SPECIFICATIONS

	16" Frame (158kg)	18" Frame	20" Frame	22" Frame
Weight Capacity	350 lbs.	350 lbs.	350 lbs.	350 lbs.
Seat Width	16" (40cm)	18" (45cm)	20" (50cm)	22" (55cm)
Width between Arm Rests	18.75" (47cm)	20.75" (52cm)	22.75" (57cm)	24.75" (62cm)
Armrest with Pad	16.75" (42cm)	18.75" (47cm)	20.75" (52cm)	22.75" (57cm)
Armrest with Arm Troughs	16.25" (41cm)	18.25" (46cm)	20.25" (51cm)	22.25" (56cm)
Height Adjustable Armrests	18" (45cm)	18" (45cm)	18" (45cm)	18" (45cm)
Seat Depth	Front to Back - 24" Wheels - 24.25"-22" (61-55cm)			
Seat Height Range From Floor to Top of Seat (transfer height)	5"rear casters - 24.25"-22.75" (61-57cm) with Padded Footplate			
Leg Rest Range	Gooseneck	16.5"-20.5" (41-52cm)	15.25"-19.25" (38-48cm)	
	Elevating - Up	19"-26" (48-66cm)	17.75"-24.75" (45-62cm)	
	Elevating - Down	18.5"-25.5" (46-64cm)	17.25"-24.25" (43-61cm)	
Usable Seat Depth w/Solid Back			16" (40cm)	
Arm Height from Top of Seat	Armrest with Pad		8" (20cm)	
	Armrest with Arm Troughs		8.25" (20cm)	
	Height Adjustable Armrests		7.5"-15" (19-38cm)	
Back Height From Top of Seat			22" (55cm)	
Gap between top of seat and bottom of back			4" (10cm)	
Maximum Back Slack			4" (10cm)	
Seat to Back Angle (or Range) (Recline)			14°	
Tilt Range			5°-29°	
Head Support Height Range - top of Seat to bottom of Cervical Support			20.5"-28.5" (52-72cm)	
Under Seat Height Clearance			19" (48cm)	
Under Seat Width Clearance			16.75" (42cm)	22.75" (57cm)
Overall Width with 24" Wheels	27" (68cm)	29" (73cm)	31" (78cm)	33" (83cm)
with 5" Casters and Armrest w/Pad	23.5" (59cm)	25.5" (64cm)	27.5" (69cm)	29.5" (74cm)
with 5" Casters and Armrest with Arm Troughs	27" (68cm)	29" (73cm)	31" (78cm)	33" (83cm)
with 5" Casters and Height Adjustable Armrests	23" (58cm)	25" (63cm)	27" (68cm)	29" (73cm)
Overall Length Min. with 24" Wheels	47.75" (121cm)			
Min. with 5" Casters	47.25" (120cm)			
Max Tilted w/Headrest & Legrest ext.	60" (152cm)			
Back of Unit to Start of Commode Opening	19" (48cm)			
Turning Diameter Min. w/ 5" rear casters	50" (127cm)			
Seat Used to Generate Specifications	#60905 22"Wx18"Dx2"H			



TILT, RECLINE, AND SEAT HEIGHT ADJUSTMENT- REHAB SHOWER/COMMODE CHAIR

- Complete Packages for Easier Ordering Available
- Stainless Steel Frame
- Tilt, Recline and Seat Height Adjustment
- Several Seat Options Available
- 350 lb. (158kg) Weight Capacity
- Seven Seat and Frame Sizes: 16"Wx18"D, 18"Wx18"D, 18"Wx20"D, 20"Wx18"D, 20"Wx20"D, 22"Wx18"D and 22"Wx20"D

This tilt-in-space shower/commode chair with stainless steel frame comes with an optional reclining back and tool-free, 4-way seat. The combination of tilt-in-space and recline easily accommodates complex positioning needs.

Multiple features combine to provide support, comfort, and pressure relief, along with the other benefits of tilt-in-space technology. The chair height adjustment allows for over toilet use or can be used with a commode pan, making this chair a versatile answer for home or institutional use.

FRAMES



P13762
16"Wx18"D
Stainless Steel
Frame



P13763
18"Wx18"D
Stainless Steel
Frame



P13764
18"Wx20"D
Stainless Steel
Frame



P13765
20"Wx18"D
Stainless Steel
Frame



P13766
20"Wx20"D
Stainless Steel
Frame



P13767
22"Wx18"D
Stainless Steel
Frame



P13768
22"Wx20"D
Stainless Steel
Frame

FRAME POSITIONING



P13759
Tilt



P13760
Recline



P13761
Tilt/Recline



P60800-4
5" Dual Locking
Casters
(2 pair)



P13770
5" Casters (pair) and
5" Dual Locking
Casters (pair)



P61124
16"Wx18"D
Ensolite® 1" foam
Front Open Seat
A-4.75"xB-7.75" opening



P60993*
18"Wx18"D
Comfortuff 1.5" waterfall foam
Front/Rear Open Seat
A-5"xB-8" opening

CASTERS

SEATS

*Seat works in all 4 positions



P60974
18"Wx18"D
Comfortuff sloped foam
Front Open Seat
A-4"xB-6.5" opening



P61058
18"Wx18"D
Ensolite® 2" waterfall foam
Front Open Contoured Seat
A-5.5"xB-8.25" opening



P61086
18"Wx18"D
Ensolite® 2" foam
Solid Seat



P61122
18"Wx20"D
Ensolite® 1" foam
Solid Seat



P61121
18"Wx20"D
Ensolite® 1" foam
Front/Rear Open Seat
A-4.5"xB-7.5" opening



PP61038
18"Wx20"D
Comfortuff
1.5" waterfall foam
Side Open Seat
A-5"xB-8" opening



P61038
20"Wx18"D
Comfortuff
1.5" waterfall foam
Front Open Seat
A-5"xB-8" opening



P60913*
18"Wx18"D
Ensolite® 2" waterfall foam
Front/Rear Open Seat
A-5.25"xB-8" opening



P60903
18"Wx20"D
Ensolite® 1" foam
Front/Rear Open Seat
A-4.5"xB-7.75" opening



PP61121
20"Wx18"D
Ensolite® 1" foam
Side Open Seat
A-4.5"xB-7.5" opening



PP61122
20"Wx18"D
Ensolite® 1" foam
Solid Seat



P61123*
20"Wx20"D
Ensolite® 1" waterfall foam
Front/Rear Open Seat
A-5"xB-8" opening



P60905
22"Wx18"D
Ensolite® 1" foam
Front/Rear Open Seat
A-4.5"xB-7.75" opening



P61126
22"Wx22"D
Ensolite® 1" waterfall foam
Front/Rear Open Seat
A-5"xB-8" opening

ARMRESTS



P13729
18"D Left Hand
Armrest with Pad



P13730
18"D Right Hand
Armrest with Pad



P13731
18"D Left Hand
Armrest with
Arm Trough



P13732
18"D Right Hand
Armrest with
Arm Trough



P13735
20"D Left Hand
Armrest with Pad



P13736
20"D Right Hand
Armrest with Pad



P13737
20"D Left Hand
Armrest with
Arm Trough

LEG RESTS



P13738
20"D Right Hand
Armrest with
Arm Trough



P13615
Left Hand
Height-Adjustable
Arms



P13616
Right Hand
Height-Adjustable
Arms



PL13725
Left Leg Rest



PR13725
Right Leg Rest



P13571
Left Elevating
Leg Rest



P13572
Right Elevating
Leg Rest

FOOT PLATES



PL11099
Left Foot Plate



PR11099
Right Foot Plate



PL11100
Left Foot Plate with
Heel Loop



PR11100
Right Foot Plate
with Heel Loop



P13891
Left Oversized
Aluminum
Foot Plate



P13892
Right Oversized
Aluminum
Foot Plate



PL11101
Left Padded
Foot Plate

BACKS



PR11101
Right Padded
Foot Plate



P13745
16"W Sling Back



P13746
16"W Solid Back



P13747
18"W Sling Back



P13748
18"W Solid Back



P13750
20"W Sling Back



P13751
20"W Solid Back

BELTS



P13752
22"W Sling Back



P13753
22"W Solid Back



PW60884
Waist Belt
(62", 64", 66", or 68"
circumference with
12" overlap)



PT60884
Trunk Belt
(62", 64", 66", or 68"
circumference with
12" overlap)



P60879
Calf Strap



P11093
Bodypoint®
Trunk Belt



P11102
Bodypoint®
Trunk Belt (pair)

POSITIONING AIDS



P11116
Bodypoint® Trunk
Belt & Waist Belt



P11112
Bodypoint® XL
Trunk Belt



P11113
Bodypoint® Belt
w/Quick Release
Knobs



P61081
Bodypoint®
Calf Strap



P11114
Bodypoint®
Knee Belt



PL13574
Left Hand
Swing-Away
Adjustable Lateral



PR13574
Right Hand
Swing-Away
Adjustable Lateral

PANS



PL13618
Left Hand
Arm-Mounted
Hip Guide



PR13618
Right Hand
Arm-Mounted
Hip Guide



P61006
Abductor/Deflector
Small



P13833
16"Wx18"D Pan/
Hanger



P13834
18"Wx18"D Pan/
Hanger



P13835
18"Wx20"D Pan/
Hanger



P13836
20"Wx18"D Pan/
Hanger

HEAD SUPPORTS



P13837
20"Wx20"D Pan/
Hanger



P13838
22"Wx18"D Pan/
Hanger



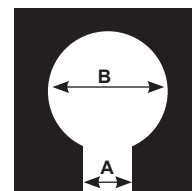
P13839
22"Wx20"D Pan/
Hanger



P13621
Head Support
Large



P13758
Head Support
XL



Seat Opening
Measurements

full option details at
activeaid.com



285TR in Tilt and Recline



285TR in Tilt

full option details at
activeaid.com

SPECIFICATIONS

	16"Wx18"D Frame	18"Wx18"D Frame	18"Wx20"D Frame	20"Wx18"D Frame	20"Wx20"D Frame	22"Wx18"D Frame	22"Wx20"D Frame
Weight Capacity	(158kg) 350 lbs.	350 lbs.	350 lbs.	350 lbs.	350 lbs.	350 lbs.	350 lbs.
Seat Width	16" (40cm)	18" (45cm)	18" (45cm)	20" (50cm)	20" (50cm)	22" (55cm)	22" (55cm)
Width between Arm Rests							
Armrest with Pad	20" (50cm)	22" (55cm)	22" (55cm)	24" (60cm)	24" (60cm)	26" (66cm)	26" (66cm)
Armrest with Arm Troughs	18" (45cm)	20" (50cm)	20" (50cm)	22" (55cm)	22" (55cm)	24" (60cm)	24" (60cm)
Height Adjustable Armrests	19.5" (49cm)	21.5" (54cm)	21.5" (54cm)	23.5" (59cm)	23.5" (59cm)	25.5" (64cm)	25.5" (64cm)
Seat Depth	18" (45cm)	18" (45cm)	20" (50cm)	18" (45cm)	20" (50cm)	18" (45cm)	20" (50cm)
Seat Height Range From Floor to Top of Seat (transfer height)	22"-25" (55-63cm)						
Leg Rest Range						<u>with Padded Footplate</u>	
Leg Rest			16"-20" (40-50cm)			14.75"-18.75" (37-47cm)	
Elevating - Up			16.5"-23.5" (41-59cm)			15.25"-22.25" (38-56cm)	
Elevating - Down			15.5"-22.5" (39-57cm)			14.25"-21.25" (36-53cm)	
Usable Seat Depth w/Solid Back	16" (40cm)	16" (40cm)	18" (45cm)	16" (40cm)	18" (45cm)	16" (40cm)	18" (45cm)
Arm Height from Top of Seat							
Armrest with Pad					8" (20cm)		
Armrest with Arm Troughs					8.5" (21cm)		
Height Adjustable Armrests					4"-14" (10-35cm)		
Back Height From Top of Seat					22" (55cm)		
Gap between top of seat and bottom of back					4" (10cm)		
Maximum Back Slack					3" (7cm)		
Seat to Back Angle (or Range) (Recline)					0-40°		
Tilt Range					0-26°		
Head Support Height Range - top of Seat to bottom of Cervical Support					22.5"-30.5" (39-77cm)		
Under Seat Height Clearance					17.75" (45cm)		
Under Seat Width Clearance	14" (35cm)	16" (40cm)	16" (40cm)	18" (45cm)	18" (45cm)	20" (50cm)	20" (50cm)
Overall Width							
min. Armrest with Arm Troughs	24" (60cm)	26" (66cm)	26" (66cm)	28" (71cm)	28" (71cm)	30" (76cm)	30" (76cm)
max. Height Adjustable Armrests	29" (73cm)	31" (78cm)	31" (78cm)	33" (83cm)	33" (83cm)	35" (88cm)	35" (88cm)
Overall Length							
Min.					42" (106cm)		
Max.					66" (167cm)		
Back of Unit to Start of Commode Opening					15" (38cm)		
Turning Diameter					53" (134cm)		
Seat Used to Generate Specifications					#60993 18"Wx18"Dx2.5"H		

Additional products are listed below
Check out the full line of products at
activeaid.com

277—Bath/Toilet Modular System
(For a newer model with more options, sizes and upgraded features see the 202)

283—Tilt
(For a newer model with more options, sizes and upgraded features see the 285 and 285TR)

310—Bath Modular System
(For a newer model with more options, sizes and upgraded features see the 202)

480—Available with 8" Casters, 20" or 24" Wheels
(For a newer model with more options, sizes and upgraded features see the 600)

496—Recline, Available with 5" Casters or 24" Wheels
(For a newer model with more options, sizes and upgraded features see the 285TR)

800—Seat Height Adjustable, Available with 5" Casters or 24" Wheels
(For a newer model with more options, sizes and upgraded features see the 1100)

1024—Seat Slope Adjustable
(For a newer model with more options, sizes and upgraded features see the 1100)

9000—Folding
(For a newer model with more options, sizes and upgraded features see the 922)