

720 Bariatric Rehab Shower/Commode Chair

Package-Order Form

600 lb. Weight Capacity
Effective July 20, 2022

ActiveAid

101 Activeaid Road
Redwood Falls, MN 56283
ph. 800.533.5330 fax 888.224.8622

Bill To:

Date: _____
P.O.#: _____
Quote#: _____
Account#: _____
Ordered By: _____
Supplier Company: _____
Address: _____
City, State, Zip: _____
Phone: _____
Email: _____

Ship To:

Name: _____
Address: _____
City/State: _____
Zip: _____
Phone: _____
Tag For: _____

Email form to orders@activeaid.com
Fax this form to 888.224.8622

Packages:

☐ PKG410 Package #1-20"W \$4,432

Package #1-20"W Includes: (no substitutions)

20"Wx20"D Stainless Steel Frame, 20" Solid Shallow Tread Wheels, 6" Casters, Bolted Axles with Anti-Tipping Levers, Wheel Locks, Seat, Left Hand Armrest with Pad, Right Hand Armrest with Pad, 20"W 1-pc. Foot Plate/Leg Rest, 20"W Contoured Solid Back, Waist Belt, and Pan/Hanger.

Seats- must select one

- ☐ P60886 20"Wx20"D Ensolite® Race Track Oval Seat (DEFAULT CHOICE)
(A-7.75"xB-12.75" opening, 1.5" foam)
- ☐ P61117 20"Wx20"D Ensolite® Front/Rear Open Seat
(A-4.5"xB-7.75" opening, 1" foam)

Choose Frame Color ☐ Black ☐ White (if no selection is made, white will be selected)

☐ PKG411 Package #2-22"W \$4,644

Package #2-22"W Includes: (no substitutions)

22"Wx20"D Stainless Steel Frame, 20" Solid Shallow Tread Wheels, 6" Casters, Bolted Axles with Anti-Tipping Levers, Wheel Locks, Seat, Left Hand Armrest with Pad, Right Hand Armrest with Pad, 22"W 1-pc. Foot Plate/Leg Rest, 22"W Solid Back, Waist Belt, and Pan/Hanger.

Seats- must select one

- ☐ P60887 22"Wx20"D Ensolite® Race Track Oval Seat (DEFAULT CHOICE)
(A-7.75"xB-12.75" opening, 1.5" foam)
- ☐ P61118 22"Wx20"D Ensolite® Front/Rear Open Seat
(A-4.5"xB-7.75" opening, 1" foam)

Choose Frame Color ☐ Black ☐ White (if no selection is made, white will be selected)

☐ PKG412 Package #3-24"W \$4,831

Package #3-24"W Includes: (no substitutions)

24"Wx20"D Stainless Steel Frame, 20" Solid Shallow Tread Wheels, 6" Casters, Bolted Axles with Anti-Tipping Levers, Wheel Locks, Seat, Left Hand Armrest with Pad, Right Hand Armrest with Pad, 24"W 1-pc. Foot Plate/Leg Rest, 24"W Solid Back, Waist Belt, and Pan/Hanger.

Seats- must select one

- ☐ P60888 24"Wx20"D Ensolite® Race Track Oval Seat (DEFAULT CHOICE)
(A-7.75"xB-12.75" opening, 1.5" foam)
- ☐ P61119 24"Wx20"D Ensolite® Front/Rear Open Seat
(A-4.5"xB-7.75" opening, 1" foam)

Choose Frame Color ☐ Black ☐ White (if no selection is made, white will be selected)

☐ PKG413 Package #4-26"W \$5,133

Package #3-26"W Includes: (no substitutions)

26"Wx20"D Stainless Steel Frame, 20" Solid Shallow Tread Wheels, 6" Casters, Bolted Axles with Anti-Tipping Levers, Wheel Locks, 26"Wx20"D Ensolite® Race Track Oval Seat, Left Hand Armrest with Pad, Right Hand Armrest with Pad, 26"W 1-pc. Foot Plate/Leg Rest, 26"W Solid Back, Waist Belt, and Pan/Hanger.

Choose Frame Color ☐ Black ☐ White (if no selection is made, white will be selected)

☐ PKG414 Package #5-28"W \$5,413

Package #4-28"W Includes: (no substitutions)

28"Wx20"D Stainless Steel Frame, 20" Solid Shallow Tread Wheels, 6" Casters, Bolted Axles with Anti-Tipping Levers, Wheel Locks, 28"Wx20"D Ensolite® Race Track Oval Seat, Left Hand Armrest with Pad, Right Hand Armrest with Pad, 28"W 1-pc. Foot Plate/Leg Rest, 28"W Solid Back, and Pan/Hanger.

Choose Frame Color ☐ Black ☐ White (if no selection is made, white will be selected)

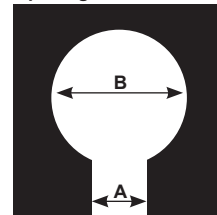
☐ PKG415 Package #6-30"W \$5,863

Package #6-30"W Includes: (no substitutions)

30"Wx20"D Stainless Steel Frame, 20" Solid Shallow Tread Wheels, 6" Casters, Bolted Axles with Anti-Tipping Levers, Wheel Locks, 30"Wx20"D Ensolite® Race Track Oval Seat, Left Hand Armrest with Pad, Right Hand Armrest with Pad, 30"W 1-pc. Foot Plate/Leg Rest, 30"W Solid Back, and Pan/Hanger.

Choose Frame Color ☐ Black ☐ White (if no selection is made, white will be selected)

Front/Rear Seat
Opening Measurements



Race Track Seat Opening
Measurements

