

# 202 Rehab Shower/Commode Chair-Bath/Toilet Modular System

## Package-Order Form

350 lb. Weight Capacity

Effective January 1, 2026

Email form to [webquotes@altimatemedical.com](mailto:webquotes@altimatemedical.com)

### Bill To:

Date: \_\_\_\_\_  
P.O.#: \_\_\_\_\_  
Quote#: \_\_\_\_\_  
Account#: \_\_\_\_\_  
Ordered By: \_\_\_\_\_  
Supplier Company: \_\_\_\_\_  
ATP (REQUIRED): \_\_\_\_\_  
Address: \_\_\_\_\_  
City, State, Zip: \_\_\_\_\_  
Phone: \_\_\_\_\_  
Email: \_\_\_\_\_

### Ship To:

Name: \_\_\_\_\_  
Address: \_\_\_\_\_  
City/State: \_\_\_\_\_  
Zip: \_\_\_\_\_  
Phone: \_\_\_\_\_  
Tag For: \_\_\_\_\_



**AltimateMedical**  
creating products · changing lives

Ph: 800.342.8968 or 507.697.6393

Fax: 877.342.8968 or 507.697.6900

[webquotes@altimatemedical.com](mailto:webquotes@altimatemedical.com) [activeaid.com](http://activeaid.com)

### Packages:

#### ☐ **PKG103 Package #1** \$1,573

**Package #1 Includes: (no substitutions)**

18"Wx18"D White Stainless Steel Frame, Legs w/Crutch Tips, 18"Wx18"D Ensolite® Front Open Seat (A-5.5"xB-8.25" opening, 2" waterfall/contoured foam), Back Tubes w/Solid Back Pad, Left Hand Armrest with Pad and Right Hand Armrest with Pad.

#### ☐ **PKG104 Package #2** \$1,831

**Package #2 Includes: (no substitutions)**

18"Wx18"D White Stainless Steel Frame, Legs w/Crutch Tips, Back Tubes w/Solid Back Pad, Seat, Armrest with Pad, and Bench.

**Seats-** must select one

- ☐ **P60993** 18"Wx18"D Comfortuff Front/Rear Open Seat\* (DEFAULT CHOICE)  
(A-5"xB-8" opening, 2.5" waterfall foam)
- ☐ **P60913** 18"Wx18"D Ensolite® Front/Rear Open Seat\*  
(A-5.25"xB-8" opening, 2" waterfall foam)
- ☐ **P61086** 18"Wx18"D Ensolite® Solid Seat  
(2" foam)
- ☐ **P61058** 18"Wx18"D Ensolite® Front Open Seat  
(A-5.5"xB-8.25" opening, 2" waterfall/contoured foam)
- ☐ **P60850** 18"Wx18"D Ensolite® Front/Rear Open Seat\*  
(A-5"xB-8" opening, 1" waterfall foam)

\*Seat works in all 4 positions

**Benches-** must select one

- ☐ **P13294** B-O Transfer Bench (DEFAULT CHOICE)
- ☐ **P13352** Short Transfer Bench

#### ☐ **PKG105 Package #3** \$1,876

**Package #3 Includes: (no substitutions)**

18"Wx18"D White Stainless Steel Frame, Legs w/Suction Cups, and Back Tubes w/Solid Back Pad, Seat, Armrest with Pad and Bench.

**Seats-** must select one

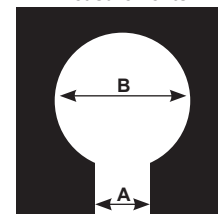
- ☐ **P60993** 18"Wx18"D Comfortuff Front/Rear Open Seat\* (DEFAULT CHOICE)  
(A-5"xB-8" opening, 2.5" waterfall foam)
- ☐ **P60913** 18"Wx18"D Ensolite® Front/Rear Open Seat\*  
(A-5.25"xB-8" opening, 2" waterfall foam)
- ☐ **P61086** 18"Wx18"D Ensolite® Solid Seat  
(2" foam)
- ☐ **P61058** 18"Wx18"D Ensolite® Front Open Seat  
(A-5.5"xB-8.25" opening, 2" waterfall/contoured foam)
- ☐ **P60850** 18"Wx18"D Ensolite® Front/Rear Open Seat\*  
(A-5"xB-8" opening, 1" waterfall foam)

\*Seat works in all 4 positions

**Benches-** must select one

- ☐ **P13294** B-O Transfer Bench (DEFAULT CHOICE)
- ☐ **P13352** Short Transfer Bench

**Seat Opening Measurements**



# 285 Rehab Shower/Commode Chair-Tilt

## Package-Order Form

350 lb. Weight Capacity  
Effective January 1, 2026

**Bill To:**

Date: \_\_\_\_\_  
P.O.#: \_\_\_\_\_  
Quote#: \_\_\_\_\_  
Account#: \_\_\_\_\_  
Ordered By: \_\_\_\_\_  
Supplier Company: \_\_\_\_\_  
ATP (REQUIRED): \_\_\_\_\_  
Address: \_\_\_\_\_  
City, State, Zip: \_\_\_\_\_  
Phone: \_\_\_\_\_  
Email: \_\_\_\_\_

Email form to [webquotes@altimatemedical.com](mailto:webquotes@altimatemedical.com)

**Ship To:**

Name: \_\_\_\_\_  
Address: \_\_\_\_\_  
City/State: \_\_\_\_\_  
Zip: \_\_\_\_\_  
Phone: \_\_\_\_\_  
Tag For: \_\_\_\_\_



**AltimateMedical**  
creating products · changing lives

Ph: 800.342.8968 or 507.697.6393

Fax: 877.342.8968 or 507.697.6900

[webquotes@altimatemedical.com](mailto:webquotes@altimatemedical.com) [activeaid.com](http://activeaid.com)

**Packages:**

☐ **PKG204 Package #2-18"Wx18"D** \$4,569

**Package #2-18"Wx18"D Includes: (no substitutions)**

18"Wx18"D Stainless Steel Frame, 4-5" Dual Locking Casters, Seat, Left Hand Armrest with Pad, Right Hand Armrest with Pad, Left Gooseneck Leg Rest, Right Gooseneck Leg Rest, Left Foot Plate with Heel Loop, Right Foot Plate with Heel Loop, 18"W Adjustable Sling Back, Waist Belt, Calf Strap, Bodypoint® Trunk Belt, Pan/Hanger, Head Support-Large.

**Seats-** must select one

- ☐ **P60993** 18"Wx18"D Comfortuff Front/Rear Open Seat (DEFAULT CHOICE)  
(A-5"xB-8" opening, 2.5" waterfall foam)
- ☐ **P60802** 18"Wx18"D Ensolite® Front Open Ring Seat  
(A-4.5"xB-7.75" opening, 1.25" foam)

**Choose Frame Color**    ☐ Black    ☐ White (if no selection is made, white will be selected)

☐ **PKG207 Package #5-18"Wx18"D** \$5,395

**Package #5-18"Wx18"D Includes: (no substitutions)**

18"Wx18"D Stainless Steel Frame, 24" Solid Shallow Tread Wheels, Bolted Axles with Anti-Tipping Lever, Wheel Locks, 5" Dual Locking Casters, Seat, Left Hand Armrest with Arm Trough, Right Hand Armrest with Arm Trough, Left Gooseneck Leg Rest, Right Gooseneck Leg Rest, Left Foot Plate with Heel Loop, Right Foot Plate with Heel Loop, 18"W Adjustable Sling Back, Waist Belt, Calf Strap, Bodypoint® Trunk Belt, Pan/Hanger, Head Support-Large.

**Seats-** must select one

- ☐ **P60993** 18"Wx18"D Comfortuff Front/Rear Open Seat (DEFAULT CHOICE)  
(A-5"xB-8" opening, 2.5" waterfall foam)
- ☐ **P60802** 18"Wx18"D Ensolite® Front Open Ring Seat  
(A-4.5"xB-7.75" opening, 1.25" foam)

**Choose Frame Color**    ☐ Black    ☐ White (if no selection is made, white will be selected)

☐ **PKG208 Package #6-18"Wx18"D** \$6,461

**Package #6-18"Wx18"D Includes: (no substitutions)**

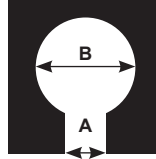
18"Wx18"D Stainless Steel Frame, 4-5" Dual Locking Casters, Seat, Left Hand Armrest with Arm Trough, Right Hand Armrest with Arm Trough, Left Elevating Leg Rest, Right Elevating Leg Rest, Left Foot Plate with Heel Loop, Right Foot Plate with Heel Loop, 18"W Adjustable Sling Back, Waist Belt, Bodypoint® Trunk Belt, Left Hand Swing-Away Adjustable Lateral, Right Hand Swing-Away Adjustable Lateral Pan/Hanger, Head Support-Large.

**Seats-** must select one

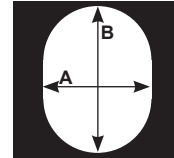
- ☐ **P60993** 18"Wx18"D Comfortuff Front/Rear Open Seat (DEFAULT CHOICE)  
(A-5"xB-8" opening, 2.5" waterfall foam)
- ☐ **P60802** 18"Wx18"D Ensolite® Front Open Ring Seat  
(A-4.5"xB-7.75" opening, 1.25" foam)

**Choose Frame Color**    ☐ Black    ☐ White (if no selection is made, white will be selected)

**Front Open Seat  
Opening Measurements**



**Race Track Oval  
Opening Measurements**



# 285TR Rehab Shower/Commode Chair-Tilt, Recline, Seat Height Adjustment

## Package-Order Form

350 lb. Weight Capacity

Effective January 1, 2026

Email form to [webquotes@altimatemedical.com](mailto:webquotes@altimatemedical.com)

### Bill To:

Date: \_\_\_\_\_  
P.O.#: \_\_\_\_\_  
Quote#: \_\_\_\_\_  
Account#: \_\_\_\_\_  
Ordered By: \_\_\_\_\_  
Supplier Company: \_\_\_\_\_  
ATP (REQUIRED): \_\_\_\_\_  
Address: \_\_\_\_\_  
City, State, Zip: \_\_\_\_\_  
Phone: \_\_\_\_\_  
Email: \_\_\_\_\_

### Ship To:

Name: \_\_\_\_\_  
Address: \_\_\_\_\_  
City/State: \_\_\_\_\_  
Zip: \_\_\_\_\_  
Phone: \_\_\_\_\_  
Tag For: \_\_\_\_\_



**AltimateMedical**  
creating products · changing lives

Ph: 800.342.8968 or 507.697.6393

Fax: 877.342.8968 or 507.697.6900

[webquotes@altimatemedical.com](mailto:webquotes@altimatemedical.com) [activeaid.com](http://activeaid.com)

### Packages:

#### ☐ **PKG210 Package #2-18"Wx18"D** \$6,047

##### Package #2-18"Wx18"D Includes: (no substitutions)

18"Wx18"D Stainless Steel Frame, Tilt/Recline, 4-5" Dual Locking Casters, Seat, 18"D Left Hand Armrest with Arm Trough, 18"D Right Hand Armrest with Arm Trough, Left Leg Rest, Right Leg Rest, Left Foot Plate with Heel Loop, Right Foot Plate with Heel Loop, 18"W Sling Back, Waist Belt, Calf Strap, Bodypoint® Trunk Belt, Pan/Hanger, Head Support-Large.

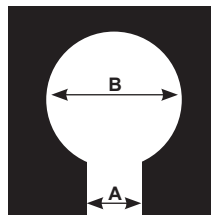
##### Seats- must select one

- ☐ **P60993** 18"Wx18"D Comfortuff Front/Rear Open Seat\* (DEFAULT CHOICE)  
(A-5"xB-8D opening, 2.5" waterfall foam)
- ☐ **P61058** 18"Wx18"D Ensolite® Front Open Contoured Seat  
(A-5.5"xB-8.25" opening, 2" waterfall foam)

\*Seat works in all 4 positions

**Choose Frame Color** ☐ Black ☐ White (if no selection is made, white will be selected)

##### Seat Opening Measurements



# 600 Rehab Shower/Commode Chair

## Package-Order Form

350 lb. Weight Capacity

Effective January 1, 2026

### Bill To:

Date: \_\_\_\_\_  
P.O.#: \_\_\_\_\_  
Quote#: \_\_\_\_\_  
Account#: \_\_\_\_\_  
Ordered By: \_\_\_\_\_  
Supplier Company: \_\_\_\_\_  
ATP (REQUIRED): \_\_\_\_\_  
Address: \_\_\_\_\_  
City, State, Zip: \_\_\_\_\_  
Phone: \_\_\_\_\_  
Email: \_\_\_\_\_

Email form to [webquotes@altimatemedical.com](mailto:webquotes@altimatemedical.com)

### Ship To:

Name: \_\_\_\_\_  
Address: \_\_\_\_\_  
City/State: \_\_\_\_\_  
Zip: \_\_\_\_\_  
Phone: \_\_\_\_\_  
Tag For: \_\_\_\_\_



**AltimateMedical**  
creating products · changing lives

Ph: 800.342.8968 or 507.697.6393

Fax: 877.342.8968 or 507.697.6900

[webquotes@altimatemedical.com](mailto:webquotes@altimatemedical.com) [activeaid.com](http://activeaid.com)

### Packages:

#### ☐ PKG405 Package #1-18"Wx18"D-5" Casters Front and Rear \$2,728

**Package #1-18"Wx18"D Includes: (no substitutions)**

18"Wx18"D Stainless Steel Frame, 4-5" Dual Locking Casters, Seat, 18"D Left Hand Armrest with Pad, 18"D Right Hand Armrest with Pad, Left Gooseneck Leg Rest, Right Gooseneck Leg Rest, Left Foot Plate, Right Foot Plate, 18"W Solid Back, Waist Belt, and Pan/Hanger.

#### **Seats-** must select one

- ☐ **P60993** 18"Wx18"D Comfortuff Front/Rear Open Seat\* (DEFAULT CHOICE)  
(A-5"xB-8" opening, 2.5" waterfall foam)
- ☐ **P60701** 18"Wx18"D Ensolite® Front/Rear Open Seat\*  
(A-4.5"xB-7.75", 1" foam)
- ☐ **P61058** 18"Wx18"D Ensolite® Front Open Contoured Seat  
(A-5.5"xB-8.25" opening, 2" waterfall foam)
- ☐ **P60675** 18"Wx18"D Ensolite® Cloverleaf Seat  
(7.5"x9" oval opening, 1" foam)
- ☐ **P60913** 18"Wx18"D Ensolite® Front/Rear Open Seat\*  
(A-5.25"xB-8" opening, 2" waterfall foam)

\*Seat works in all 4 positions

**Choose Frame Color** ☐ Black ☐ White (if no selection is made, white will be selected)

#### ☐ PKG406 Package #2-18"Wx18"D-24" Solid Shallow Tread Wheels \$3,377

**Package #2-18"Wx18"D Includes: (no substitutions)**

18"Wx18"D Stainless Steel Frame, 24" Solid Shallow Tread Wheels, 5" Casters, Bolted Axles with Wheel Mounts and Anti-Tipping Levers, Wheel Locks, Seat, 18"D Left Hand Armrest with Pad, 18"D Right Hand Armrest with Pad, Left Gooseneck Leg Rest, Right Gooseneck Leg Rest, Left Foot Plate, Right Foot Plate, 18"W Solid Back, Waist Belt, and Pan/Hanger.

#### **Seats-** must select one

- ☐ **P60993** 18"Wx18"D Comfortuff Front/Rear Open Seat\* (DEFAULT CHOICE)  
(A-5"xB-8" opening, 2.5" waterfall foam)
- ☐ **P60701** 18"Wx18"D Ensolite® Front/Rear Open Seat\*  
(A-4.5"xB-7.75", 1" foam)
- ☐ **P61058** 18"Wx18"D Ensolite® Front Open Contoured Seat  
(A-5.5"xB-8.25" opening, 2" waterfall foam)
- ☐ **P60675** 18"Wx18"D Ensolite® Cloverleaf Seat  
(7.5"x9" oval opening, 1" foam)
- ☐ **P60913** 18"Wx18"D Ensolite® Front/Rear Open Seat\*  
(A-5.25"xB-8" opening, 2" waterfall foam)

\*Seat works in all 4 positions

**Choose Frame Color** ☐ Black ☐ White (if no selection is made, white will be selected)

